

Violin Concerto in D Major

I. Allegro Moderato

Violino I

P. Tschaikowsky. 1840-1893
Op. 35

Allegro moderato.

7 *p* *cresc.* *mf* *cresc.*

16 *f* *ff*

20 *f* *mf* *p* 3 2

30 *p* 3 *p*

36 4 pizz. *p* arco

45 *dolce* *pp*

51 *cresc.*

56 *f* *f*

61 *ff*

65 2 *dim.* *pp*

Violino I

2

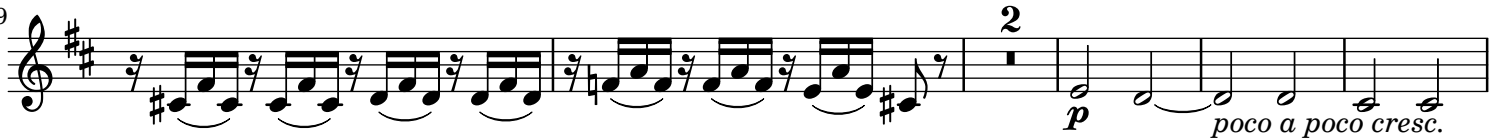
72



76



79



86



90



95



101



105



112



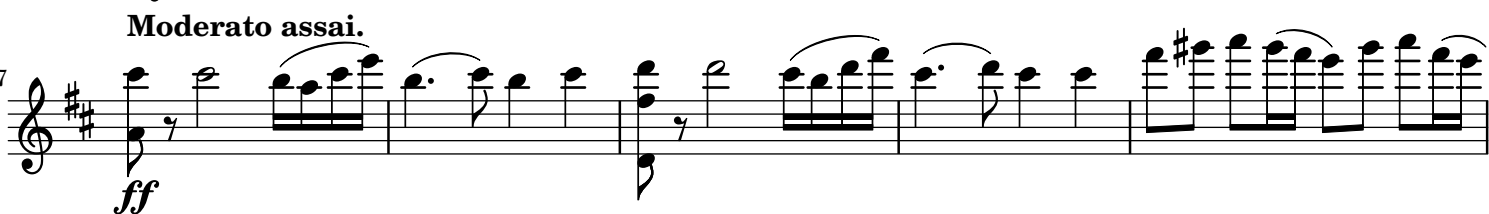
115



119



127



132 *ff*

136

141 *p* *mf**p*

145 *mf**p*

149 *mf* *p* *mf* *p*

153 *mf*

157 *cresc.* *ff* *f*

162 pizz. *pp*

167 arco *p* *pizz.* *pp*

173 arco

178 pizz. arco pizz. arco pizz. arco

184 *ff*

191

195 *ff*

200

205 *ff*

208

211 *pp* *pp dolce*

263 *poco cresc.* *p* *pp* *pizz.*

270 *cresc.* *arco*

276 *mf dim.* *pp*

282 *cresc.*

287 *pizz.* *f* *cresc.*

292 *arco* *ff* *pp*

299  *p*

304  *pp*

307  *p cresc.*

310  *mf*

314  *f*

320  *pp*

325  *mf*

330  *poco a poco cresc.*

336  *f* *mf* *f* *mf* *f* *mf* *f*

340  *f* *mf*

Allegro gusto.

345  *f* *p* *cresc.* *f*

354  *f*

359 *f* *ff* *p* *f* **Stringendo.**

365 *f* *ff* **Piu mosso.**

370 *ff*

375

380

The musical score for Violino I spans measures 359 to 380. It begins with a treble clef and a key signature of two sharps (F# and C#). Measure 359 starts with a forte (*f*) dynamic, followed by a fortissimo (*ff*) section. A piano (*p*) section follows, marked with a crescendo hairpin. The tempo is marked 'Stringendo.' at the beginning of measure 360. Measure 365 introduces a 'Piu mosso.' tempo change. The score continues with various rhythmic patterns and dynamics, including fortissimo (*ff*) and piano (*p*). The piece concludes at measure 380 with a final chord and a double bar line.

Violin Concerto in D Major

II. Canzonetta

Violino I

P. Tschaikowsky. 1840-1893

Op. 35

11

pp con sordini

23

pp

33

pp *p* *rit.* *pp*

43

piu f *pp* *p*

53

5 *p* *p cresc.* *piu f* *p*

69

pizz. *p* *arco* *pp*

80

mf *p cresc.*

90

mf *p* *mf* 8

109

rallent. *dim.* *p* *pp* *riten. molto*

Violin Concerto in D Major

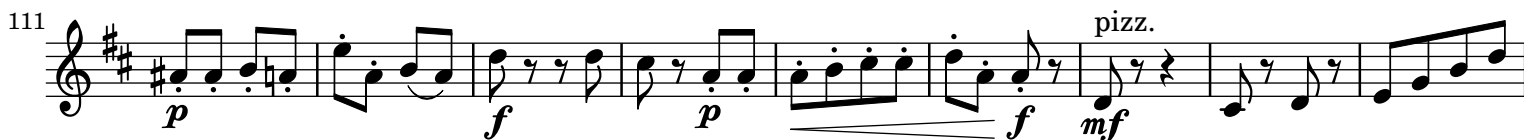
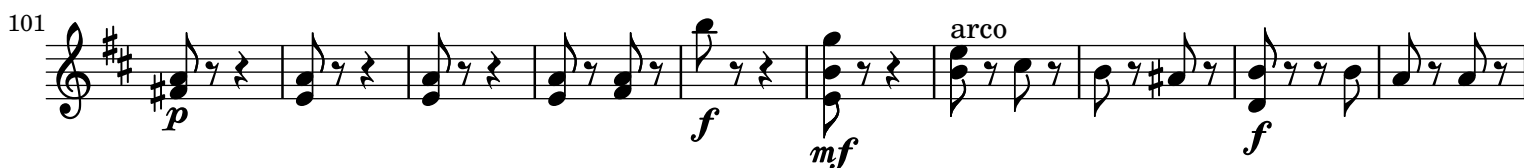
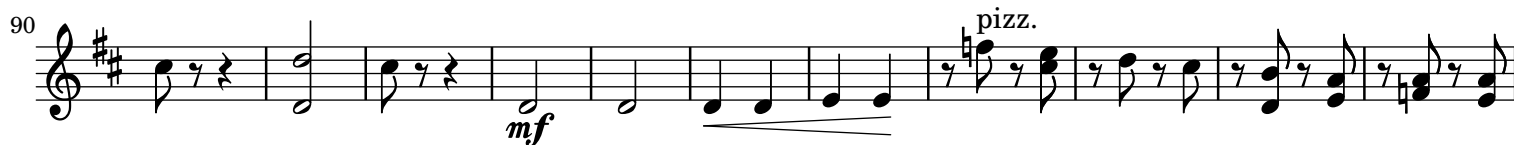
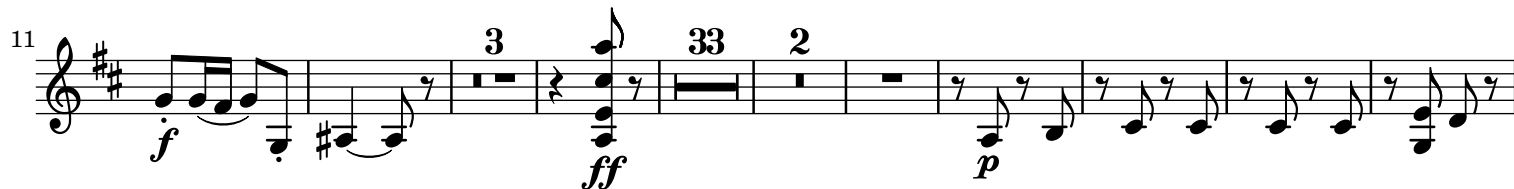
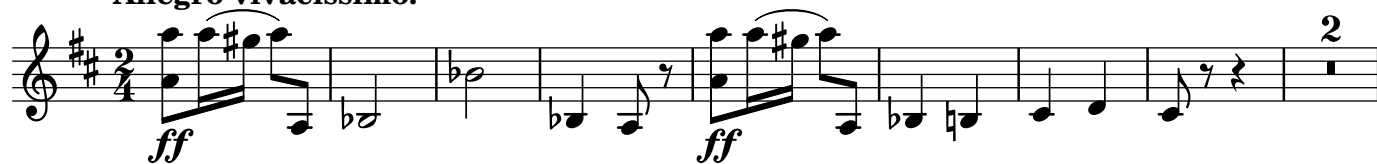
III. Finale

Violino I

P. Tschaikowsky. 1840-1893

Op. 35

Allegro vivacissimo.



Poco meno mosso.
arco

141 **4** **10**
ff *pp*

Tempo I.

164 **8**
p *mf*

182 *mf*

Molto meno mosso.

194 *p*

205

Poco a poco rallentando

215 *pp*

Quasi andante.

Tempo I.
Poco a poco string.

227 **4 4**
p

245 *f* *dim.* *p*

255 **2**
f *p* *mf* *dim.* *p* *mf* *dim.* *p*

266 *mf* *dim.* *p* *mf* *cresc.*

278 *f* *f*

289 *f*

296 *pizz.*
p

306 *arco*
ff

317 2

328 *p* *cresc.*

337 *f p* *f p* *f p* *f*

Tempo I.
Poco meno mosso.

346 3 18 8 *pizz.*
ff *mf*

382 *arco*
mf

393 7 Molto meno mosso.
p

411 Poco a poco rallentando
pp

422

Poco a poco stringendo.
Quasi andante.

433 14 10 Tempo I.
p *f*

465 *dim.* *p* *f* *p* 2

476 *mf* *dim.* *p* *mf* *dim.* *p* *mf* *dim.*

486 *p* *mf* *cresc.* *f*

498 *mf* *pizz.* *p*

509 *f* *mf* *arco* *f* *p*

519 *f* *p* *f* *mf* *pizz.*

528 *f* *p poco a poco cresc.*

538 *arco* *cresc.*

545 *sempre cresc.*

551

556 *f*

562 *ff* 2 2

572

584

594

p cresc.

f

602

611

f

620

630

ff

This musical score for Violino I spans measures 572 to 630. The key signature is D major (two sharps). The notation is as follows:

- Measure 572:** Treble clef, D major key signature. The measure contains a series of eighth notes: D4, E4, F#4, G4, A4, B4, C5, D5, followed by a quarter rest. A '2' is written above the staff.
- Measure 584:** Treble clef, D major key signature. The measure contains a series of eighth notes: D4, E4, F#4, G4, A4, B4, C5, D5, followed by a quarter rest. A '2' is written above the staff.
- Measure 594:** Treble clef, D major key signature. The measure contains a series of eighth notes: D4, E4, F#4, G4, A4, B4, C5, D5, followed by a quarter rest. A '2' is written above the staff.
- Measure 602:** Treble clef, D major key signature. The measure contains a series of eighth notes: D4, E4, F#4, G4, A4, B4, C5, D5, followed by a quarter rest. A '2' is written above the staff.
- Measure 611:** Treble clef, D major key signature. The measure contains a series of eighth notes: D4, E4, F#4, G4, A4, B4, C5, D5, followed by a quarter rest. A '2' is written above the staff.
- Measure 620:** Treble clef, D major key signature. The measure contains a series of eighth notes: D4, E4, F#4, G4, A4, B4, C5, D5, followed by a quarter rest. A '2' is written above the staff.
- Measure 630:** Treble clef, D major key signature. The measure contains a series of eighth notes: D4, E4, F#4, G4, A4, B4, C5, D5, followed by a quarter rest. A '2' is written above the staff.