

Konzert für Klarinette in A dur

K.622

Violoncello

W.A. MOZART

I

Allegro

Violoncello part of the first movement of Mozart's Clarinet Concerto in A major, K. 622. The score is written in bass clef with a key signature of two sharps (F# and C#) and a common time signature (C). It consists of 52 measures across eight staves. The piece begins with a piano (*p*) dynamic and features various musical notations including eighth notes, sixteenth notes, and rests. Dynamics range from piano (*p*) to forte (*f*). There are two repeat signs, one labeled **A** and another labeled **B**. The piece concludes with a "Solo" section marked with an 8 and a final double bar line.

65 *p*

72 **C** Tutti *f* *p* Solo

80 *f* *p* 7

94 **D** Tutti *f* Solo 1 *p*

103

110 8

125 **E** *p*

132

138

145 3

154 Tutti *f*

159

164 *p* *f*

171 Solo 2 *p* 1

182

189 **F** Tutti *f* Solo *p*

196 6

210 **G** *f*

216 *p* 1

224 1 Tutti *f* *p*

231 *f* *p*

238 *f*

244 Solo 10

259 *p*

265 **H** Tutti *f* *p*

272 Solo 3

283 **I** 3 Tutti *f* Solo 1 *p*

292 1 1

300 1 1

309

K

316 5 2

329

336

343 Tutti *f*

348 *p*

354



II

Adagio



12



23



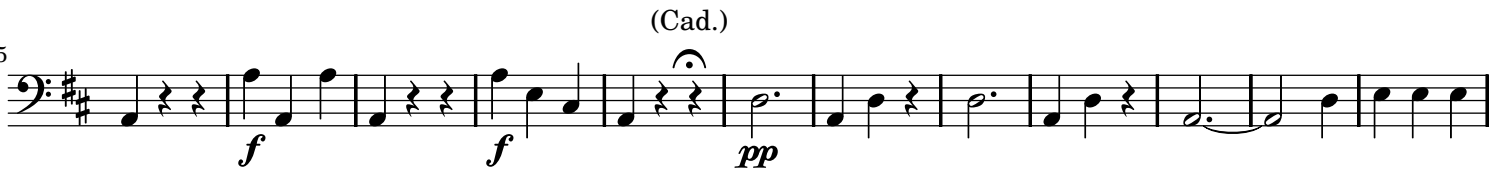
33



44



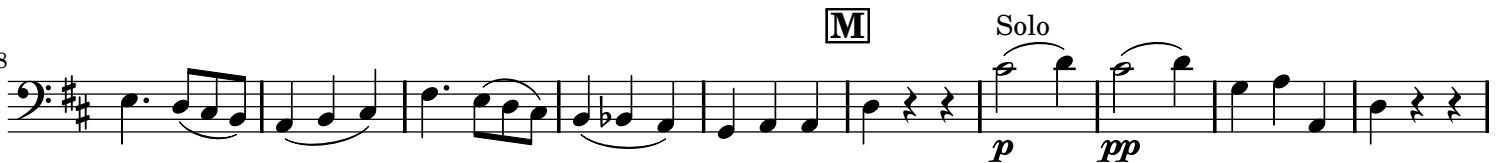
55



67



78



88



III

Rondo - Allegro

8 **Tutti**
p *f* *f*

15 **Solo**
p *p*

24 **N** **Tutti** **Solo 4** **Tutti**
p *f*

41 **Solo** 2 3 **Tutti**
p *f*

53 **Solo** 4 2
p

66 **O** **Tutti** 2 4 **Solo**
p

81 **P**

89

98 2 4
sfp *sfp* *p*

113 6 **Tutti** 3
f

129 *f*

137 *p* Solo 3

148

157 *f* *p* **Q**

166

175 *f* **R** 7 4

193 9

210

218 *pp* *p* **S** 1

227 *sfp* *sfp* 2

236 *p* 4 7

255 *Tutti*
p *f* *p* *f* *p*

262 *Solo*
p

270 *Tutti* *Solo* *Tutti*
p *f*

287 *Solo* *Tutti*
p *f*

299 *Solo*
p

307 *f* *p* *f* *p*

317 *f* *p*

326 *f* *p*

333 *f* *Tutti*
p *f*

347