

The Magic Flute (Die Zauberflöte)

Overture

Contrabasso

W. A. Mozart (1756-1791)

KV 620

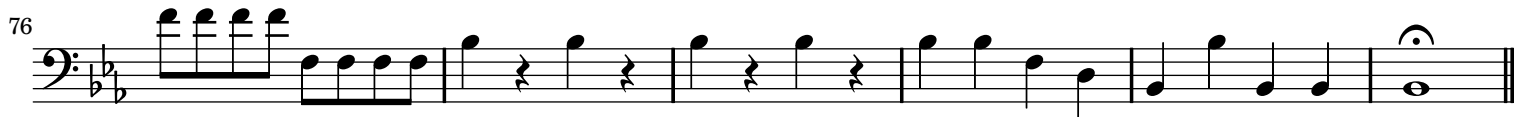
Adagio

Measures 1-7 of the Adagio section. The music is in bass clef with a key signature of two flats (B-flat and E-flat). Measure 1 starts with a forte (ff) dynamic. Measures 2-4 feature a melodic line with a fermata on the first note of each measure. Measure 5 begins with a sforzando (sf) dynamic. Measure 6 has a piano (p) dynamic. Measure 7 ends with a fermata.

KV 620

Allegro

Measures 8-67 of the Allegro section. The music is in bass clef with a key signature of two flats. Measure 8 starts with a forte (f) dynamic. Measures 9-10 are marked with a piano (p) dynamic. Measures 11-12 are marked with a forte (f) dynamic. Measures 13-14 are marked with a piano (p) dynamic. Measures 15-16 are marked with a forte (f) dynamic. Measures 17-18 are marked with a piano (p) dynamic. Measures 19-20 are marked with a forte (f) dynamic. Measures 21-22 are marked with a piano (p) dynamic. Measures 23-24 are marked with a forte (f) dynamic. Measures 25-26 are marked with a sforzando (sf) dynamic. Measures 27-28 are marked with a forte (f) dynamic. Measures 29-30 are marked with a sforzando (sf) dynamic. Measures 31-32 are marked with a forte (f) dynamic. Measures 33-34 are marked with a piano (p) dynamic. Measures 35-36 are marked with a forte (f) dynamic. Measures 37-38 are marked with a sforzando (sf) dynamic. Measures 39-40 are marked with a piano (p) dynamic. Measures 41-42 are marked with a forte (f) dynamic. Measures 43-44 are marked with a sforzando (sf) dynamic. Measures 45-46 are marked with a piano (p) dynamic. Measures 47-48 are marked with a forte (f) dynamic. Measures 49-50 are marked with a sforzando (sf) dynamic. Measures 51-52 are marked with a piano (p) dynamic. Measures 53-54 are marked with a forte (f) dynamic. Measures 55-56 are marked with a sforzando (sf) dynamic. Measures 57-58 are marked with a piano (p) dynamic. Measures 59-60 are marked with a forte (f) dynamic. Measures 61-62 are marked with a sforzando (sf) dynamic. Measures 63-64 are marked with a piano (p) dynamic. Measures 65-66 are marked with a forte (f) dynamic. Measure 67 ends with a fermata.



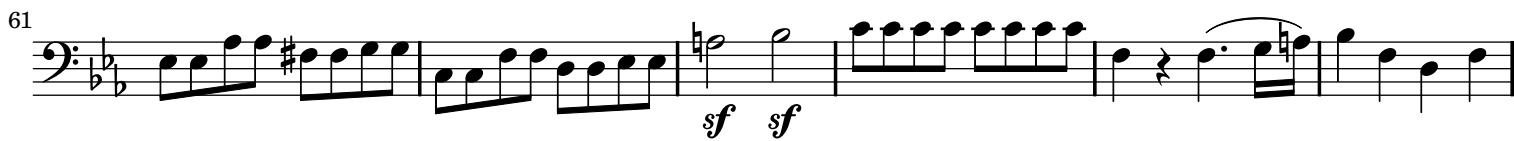
KV 620

Adagio



KV 620

Allegro



Contrabasso

3

95



105



112



119

