

# The Magic Flute (Die Zauberflöte)

## Overture

### Clarineti

W. A. Mozart (1756-1791)

KV 620

Adagio

First system of the Overture, Adagio tempo. The music is in B-flat major (two flats) and 2/4 time. It begins with a fortissimo (ff) dynamic. The first measure contains a half note chord of B-flat and D-flat. The second measure contains a half note chord of E-flat and G. The third measure contains a half note chord of A-flat and C. The fourth measure is a whole rest. The fifth measure contains a half note chord of B-flat and D-flat, marked with a first ending bracket (a2). The sixth measure contains a half note chord of E-flat and G. The seventh measure contains a half note chord of A-flat and C. The eighth measure is a whole rest. The system ends with a double bar line.

KV 620

Allegro

Second system of the Overture, Allegro tempo. The music is in B-flat major (two flats) and 2/4 time. It begins with a first ending bracket (21) over a half note chord of B-flat and D-flat. The second measure contains a half note chord of E-flat and G, marked with a first ending bracket (a2) and a piano (p) dynamic. The third measure contains a half note chord of A-flat and C. The fourth measure contains a half note chord of B-flat and D-flat, marked with a forte (f) dynamic. The fifth measure contains a half note chord of E-flat and G. The sixth measure contains a half note chord of A-flat and C. The seventh measure contains a half note chord of B-flat and D-flat. The eighth measure contains a half note chord of E-flat and G. The system ends with a double bar line.

29

38

52

59

66

74

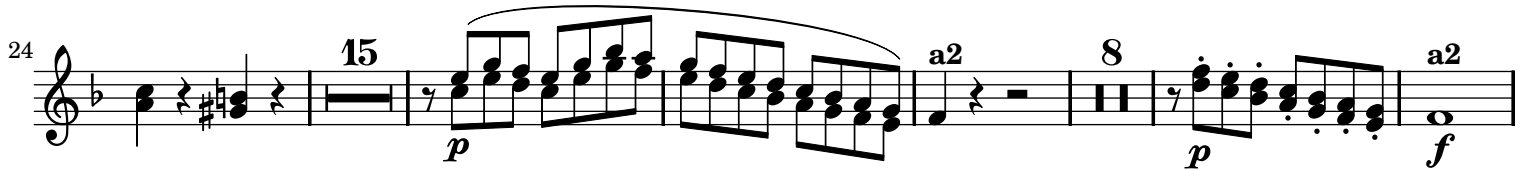
Public Domain

## Adagio



## KV 620

## Allegro



109

118