

Violin I
Eine Kleine Nachtmusik
— I. Allegro —

W.A. Mozart

K525

Allegro

Violin I

6

11

17

23

28

33

38

2

Mozart - Eine Kleine Nachtmusik — Violin I

Violin I

Violin I score for Mozart's *Eine Kleine Nachtmusik*, measures 91-132. The score is written for Violin I in G major (one sharp). The key signature is G major. The time signature is 2/4. The score includes various musical notations such as trills (tr), dynamics (sf, p, f, cresc.), and articulation (accents, slurs). Measure numbers 91, 97, 102, 107, 112, 117, 122, 127, and 132 are indicated at the start of their respective staves. The score ends with a double bar line at measure 132.

Measures 91-96: Trills on G4 and A4, followed by a crescendo leading to a D5 note.

Measures 97-101: Trills on G4 and A4, followed by a D5 note and a triplet of G4-A4-B4.

Measures 102-106: Trills on G4 and A4, followed by a D5 note and a triplet of G4-A4-B4.

Measures 107-111: Trills on G4 and A4, followed by a D5 note and a triplet of G4-A4-B4.

Measures 112-116: Trills on G4 and A4, followed by a D5 note and a triplet of G4-A4-B4.

Measures 117-121: Trills on G4 and A4, followed by a D5 note and a triplet of G4-A4-B4.

Measures 122-126: Trills on G4 and A4, followed by a D5 note and a triplet of G4-A4-B4.

Measures 127-131: Trills on G4 and A4, followed by a D5 note and a triplet of G4-A4-B4.

Measure 132: Trill on G4, followed by a D5 note and a triplet of G4-A4-B4.

Violin I
Eine Kleine Nachtmusik
 — II. Romanze —

W.A. Mozart

K525

Andante

Violin I

5

9

13

17

21

25

30

A

p *f* *p* *cresc.* *fp* *f* *p* *f*

Violin I

Violin I score for Mozart's Eine Kleine Nachtmusik, measures 36 to 69. The score is written in treble clef with a key signature of two flats (B-flat and E-flat). The music features various dynamics and articulations.

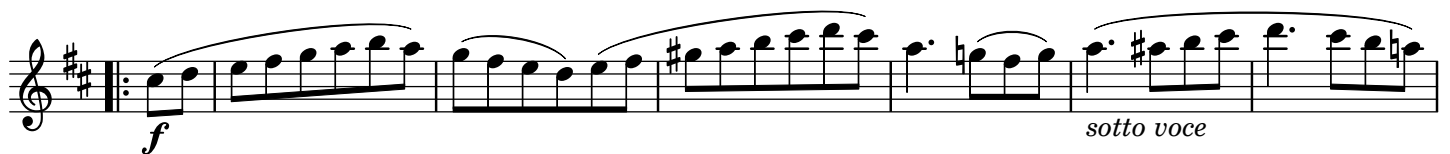
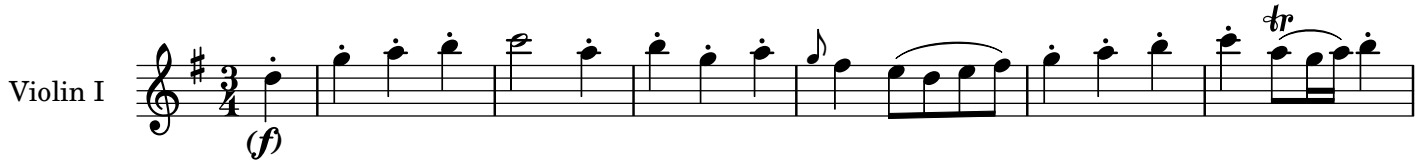
Measures 36-40: *p* (piano). Measure 41: *fp* (fortissimo piano). Measures 46-50: *f* (forte). Measures 56-60: *p* (piano). Measure 60: *cresc.* (crescendo) leading to *fp* (fortissimo piano). Measures 64-68: *f* (forte) and *p* (piano). Measure 69: *f* (forte).

Violin I
Eine Kleine Nachtmusik
 — III. Menuetto —

W.A. Mozart

K525

Allegretto



K525

Allegro

Violin I

6

12

18

24

29

34

40

46

Violin I

8

51 

57 

63 

69 

74 

79 

84 **B** 

90 

96 

101 

Violin I

Violin I score for Mozart's *Eine Kleine Nachtmusik*, measures 107-158. The score is written for a single violin in G major (one sharp). The key signature is G major (one sharp). The time signature is 2/4. The score includes various musical notations such as slurs, ties, and dynamic markings (*f* for forte, *p* for piano). The piece concludes with a double bar line and a final G note.

Measures 107-158. The score is written for a single violin in G major (one sharp). The key signature is G major (one sharp). The time signature is 2/4. The score includes various musical notations such as slurs, ties, and dynamic markings (*f* for forte, *p* for piano). The piece concludes with a double bar line and a final G note.