

String Quartet KV. 465 (nr. 19) "Dissonances"

for 2 violins, viola and cello

Viola.

W. A. Mozart (1756-1791)

Adagio.

Adagio.

8

15

22 Allegro.

27

32

39

46

52

57

64

70

Public Domain

78 *f* *p* *f*

83

90 *p*

97 *cresc.*

103 *f* *p* *cresc.* *p*

109 *cresc.*

116 *f*

121 *p* *p* *f*

127 *p*

132 *f* *p*

138 *tr*

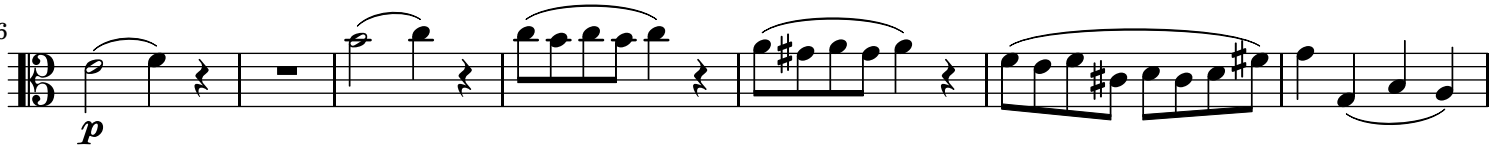
143 *f* *p*

Detailed description of the musical score: The score is for a Viola part, measures 78 to 143. It is written in 3/8 time. The key signature starts with one sharp (F#) and changes to two flats (Bb, Eb) at measure 103. The dynamics are marked as follows: *f* (forte) at measures 78, 103, 116, and 143; *p* (piano) at measures 83, 90, 103, 109, 121, 127, 132, and 138; and *cresc.* (crescendo) at measures 97 and 109. Trills (*tr*) are marked at measures 78, 90, 132, and 138. Triplets (3) are marked at measures 78 and 83. The score includes various musical notations such as slurs, ties, and accidentals.

149



156



163



170



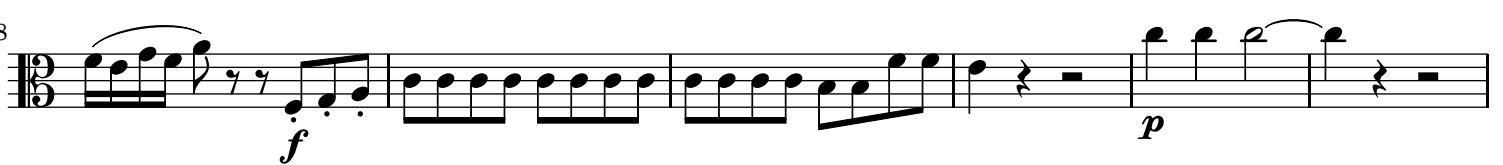
175



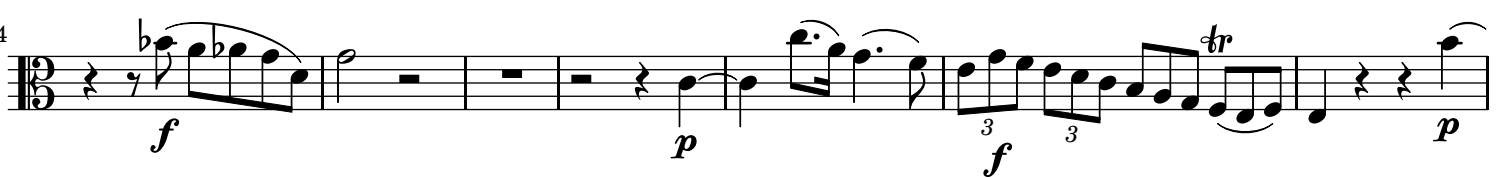
181



188



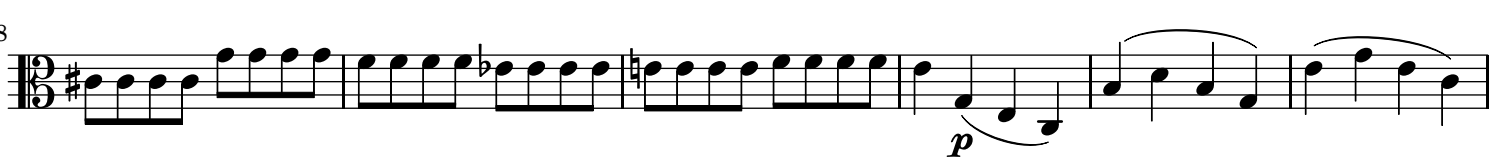
194



201



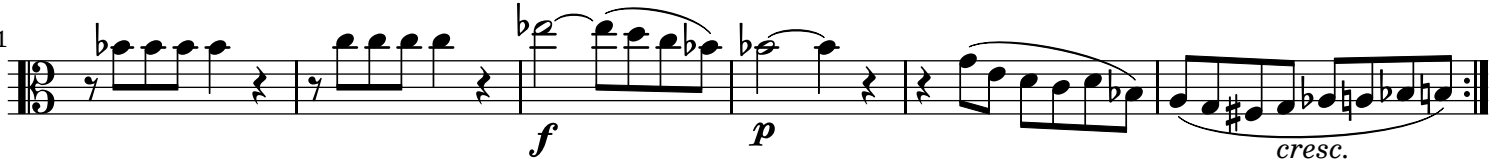
208



214



221



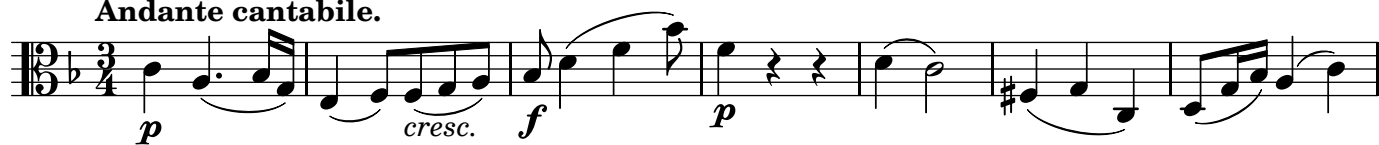
227



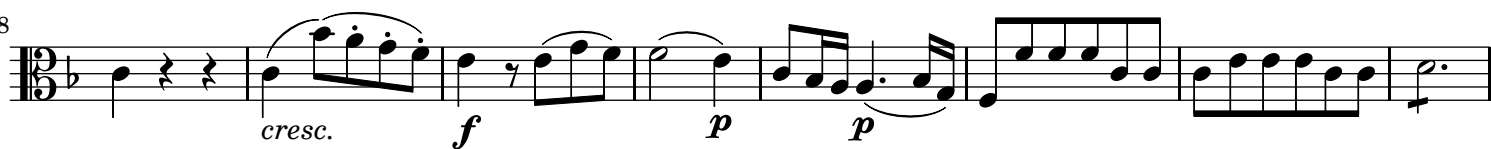
233



239

**Andante cantabile.**

8



16



23



31



38



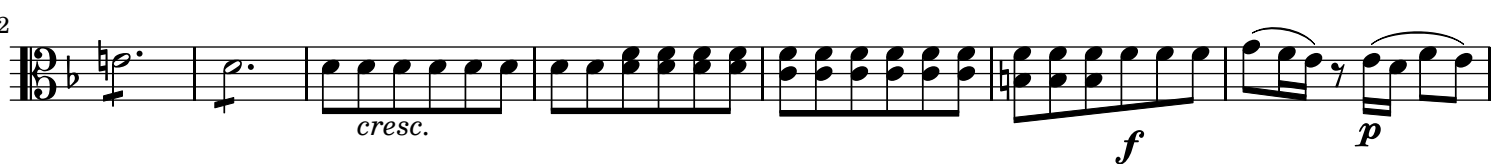
47



55



62



69 *cresc.* *f* *p*

76 *pp* *cresc.* *f* *p* *fp*

84 *pp* *cresc.* *f*

93 *p* *sf* *sf* *fp* *f* *p* *cresc.*

100 *p* *p*

107 *cresc.* *pp*

Minuetto.

11 *f* *p* *f* *f*

30 *f* *p*

39 *f* *sf* *p*

49 *f* *sf* *p*

58

Trio.



65



71



78



84



91



97



Allegro.



9



18



29



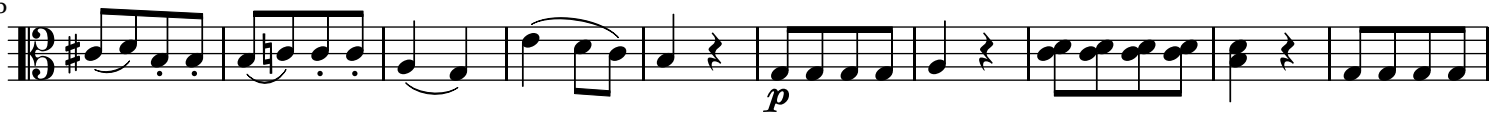
39



49



65



75



85



95



105



115



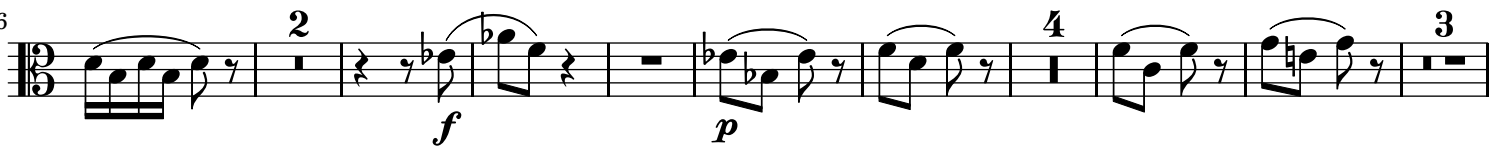
126



136



146



163



173



182



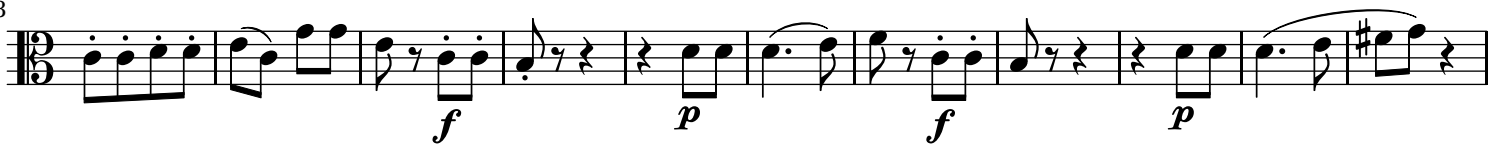
192



203



213



224



235



246



257



268



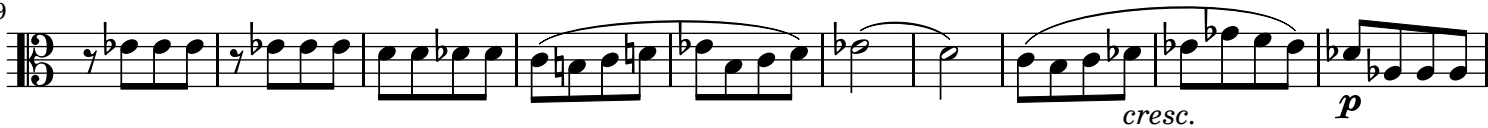
279



289



299



309



319



330

341

352

363

374

385

394

403

411

The musical score for Viola, measures 330 to 411, is written in 3/4 time. The key signature has one flat (B-flat). The score includes various dynamics and articulations:

- Measure 330:** Starts with a half note G2, followed by quarter notes A2, B2, and C3. The melody continues with eighth and quarter notes.
- Measure 341:** Starts with a half note G2, followed by quarter notes A2, B2, and C3. The melody continues with eighth and quarter notes. Dynamics: *p*.
- Measure 352:** Starts with a half note G2, followed by quarter notes A2, B2, and C3. The melody continues with eighth and quarter notes. Dynamics: *p*.
- Measure 363:** Starts with a half note G2, followed by quarter notes A2, B2, and C3. The melody continues with eighth and quarter notes. Dynamics: *p*.
- Measure 374:** Starts with a half note G2, followed by quarter notes A2, B2, and C3. The melody continues with eighth and quarter notes. Dynamics: *f*, *p*, *cresc.*
- Measure 385:** Starts with a half note G2, followed by quarter notes A2, B2, and C3. The melody continues with eighth and quarter notes. Dynamics: *f*, *p*, *cresc.*, *f*.
- Measure 394:** Starts with a half note G2, followed by quarter notes A2, B2, and C3. The melody continues with eighth and quarter notes. Dynamics: *p*, *cresc.*, *f*, *p*, *cresc.*
- Measure 403:** Starts with a half note G2, followed by quarter notes A2, B2, and C3. The melody continues with eighth and quarter notes. Dynamics: *f*, *p*.
- Measure 411:** Starts with a half note G2, followed by quarter notes A2, B2, and C3. The melody continues with eighth and quarter notes. Dynamics: *f*.