

# Symphony nr. 18 in F major K. 130

Wolfgang Amadeus Mozart (1756-1791)

Allegro.

Flauto II

5  
*f*

10

*p* *f*

20

5

35

*p* *f* *p* 6

55

*f* *f* 8

72

*f*

78

*f* *f* 4

90

5  
*p*

104

*f* *f* 4

125

*f*

Andantino cantabile.

Flauto II

10 *f*

20 4

36 *p* *f* *tr* *p* *f*

49 10 *f*

71 4 *tr*

84 *tr*

96 13 *p* *f*

MENUETTO.

Flauto II

4

12 6 *f*

27 4 *f*

Trio.

Men.D.C.

Allegro molto.

Flauto II

*f*

The first staff of music is written in treble clef with a key signature of one flat (B-flat). It begins with a series of eighth notes: B4, C5, D5, E5, F5, G5, A5, B5. This is followed by a quarter rest, then a double bar line. Above the double bar line is a 'C' time signature, indicating common time. The staff continues with a series of notes: B4, C5, D5, E5, F5, G5, A5, B5, followed by a quarter rest, then a double bar line. Below the double bar line is a 'p' dynamic marking, indicating piano. The staff concludes with a series of notes: B4, C5, D5, E5, F5, G5, A5, B5, followed by a quarter rest, then a double bar line.

[illegible][illegible]

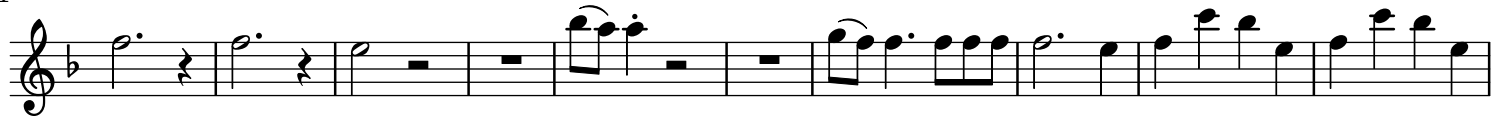
The first staff of music is written in treble clef with a key signature of one flat (B-flat). It begins with a piano (*p*) dynamic. The melody consists of eighth and quarter notes, followed by a quarter rest, and then a series of eighth notes. The dynamics shift to forte (*f*) in the second measure, which includes a quarter rest followed by a series of eighth notes.

[illegible]

126



141



151



167



173



182

