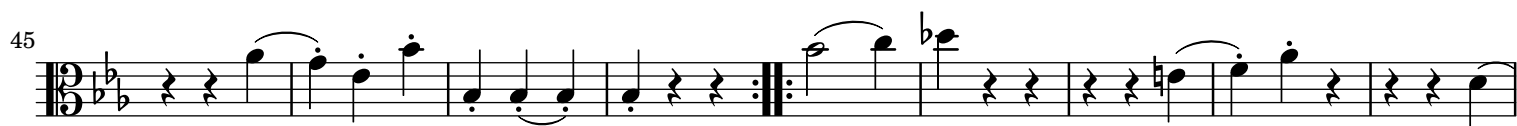
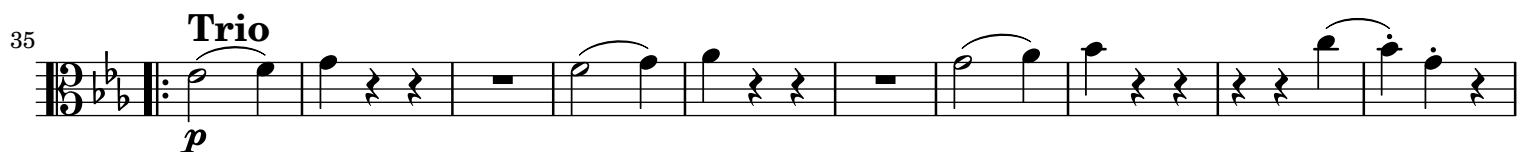
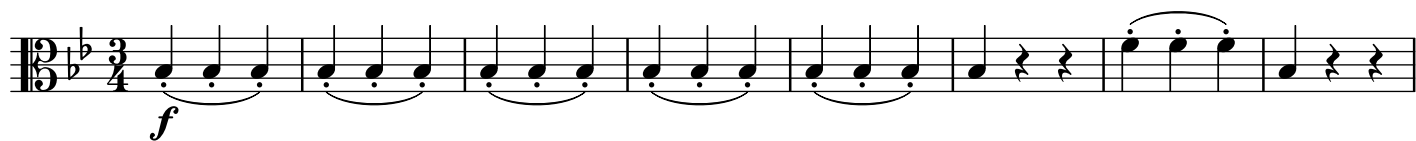




II. Menuetto



III.

Adagio

Adagio

9/8

1-8: *p* *poco f*

9-16: *f* *p*

17-24: *poco f*

25-32: *f* *p*

33-40: *p* *pp*

41-48: *p* *pp*

IV. Menuetto

Musical score for "The Rose Tree" by M. D. C. The score is in 3/4 time, key of B-flat major, and consists of four staves. The first staff starts with a treble clef and a key signature of one flat. The second staff has a repeat sign. The third staff is marked "Trio" and has a key signature change to two flats. The fourth staff has a repeat sign and a key signature change to one flat. Dynamics include *f* (forte), *p* (piano), and *mf* (mezzo-forte). The score ends with a double bar line and a repeat sign.

V.

Presto

4

10

20

30

39

49

58

p

f

p

f

p

f

FINE