

Symphonie n°1 en si bémol

Violon 1

François-Joseph GOSSEC

Allegro Maestoso

6

13

21

29

36

46

57

65

70

77

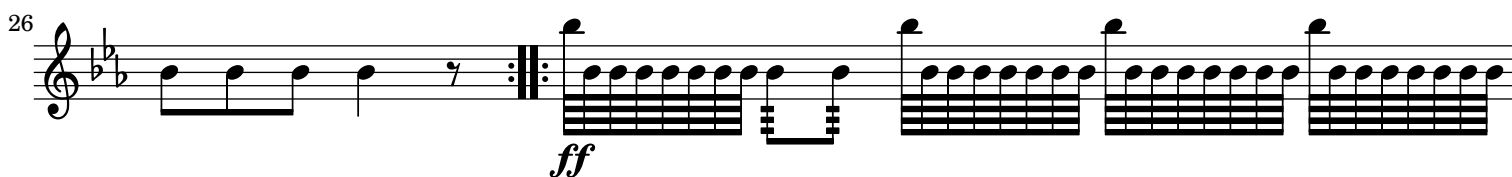
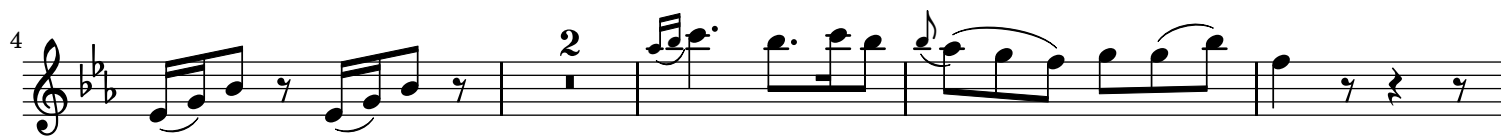
84

Violon 1 score for Gossec's Symphony No. 1 in B-flat major, measures 91-186. The score is written for a single violin part in B-flat major (two flats) and 4/4 time. The key signature is B-flat major (two flats). The score is divided into measures 91, 96, 105, 114, 122, 133, 141, 148, 154, 164, 173, 180, and 186. The notation includes various musical symbols such as notes, rests, accidentals, and dynamic markings. The score is written on a single staff with a treble clef.

Measures 91-186. The score is written for a single violin part in B-flat major (two flats) and 4/4 time. The key signature is B-flat major (two flats). The score is divided into measures 91, 96, 105, 114, 122, 133, 141, 148, 154, 164, 173, 180, and 186. The notation includes various musical symbols such as notes, rests, accidentals, and dynamic markings. The score is written on a single staff with a treble clef.

Measures 91-186. The score is written for a single violin part in B-flat major (two flats) and 4/4 time. The key signature is B-flat major (two flats). The score is divided into measures 91, 96, 105, 114, 122, 133, 141, 148, 154, 164, 173, 180, and 186. The notation includes various musical symbols such as notes, rests, accidentals, and dynamic markings. The score is written on a single staff with a treble clef.

Larghetto Siciliana Pantomina



28

29

31

34

37

41

44

47

52

p

Gossec - Symphonie n°1 en si bémol

Non Presto



81 *f* *f*

92 *f*

101 *p*

110 *f*

119

129

140

148

This image shows a page of a violin score for the first violin (Violon 1) in Gossec's Symphony No. 1 in B-flat major. The page contains measures 81 through 148, with measure numbers 81, 92, 101, 110, 119, 129, 140, and 148 explicitly labeled at the start of their respective staves. The music is written in treble clef with a key signature of two flats (B-flat major). The score features a variety of musical textures, including sustained chords, moving lines, and complex rhythmic patterns. Notable features include:

- Measures 81-88: A series of chords, mostly octaves, with a forte (*f*) dynamic.
- Measures 92-100: A more active passage with sixteenth-note runs and triplets, starting with a forte (*f*) dynamic.
- Measures 101-109: A passage featuring triplets and a piano (*p*) dynamic.
- Measures 110-118: A section with a forte (*f*) dynamic, characterized by sixteenth-note patterns and triplets.
- Measures 119-128: A section with a mix of chords and moving lines, including triplets.
- Measures 129-138: A section with a strong rhythmic drive, featuring many triplets and sixteenth-note patterns.
- Measures 140-147: A section with a mix of chords and moving lines, including triplets.
- Measure 148: The final measure on the page, ending with a double bar line.