

Symphony No. 9 in E minor

From the New World

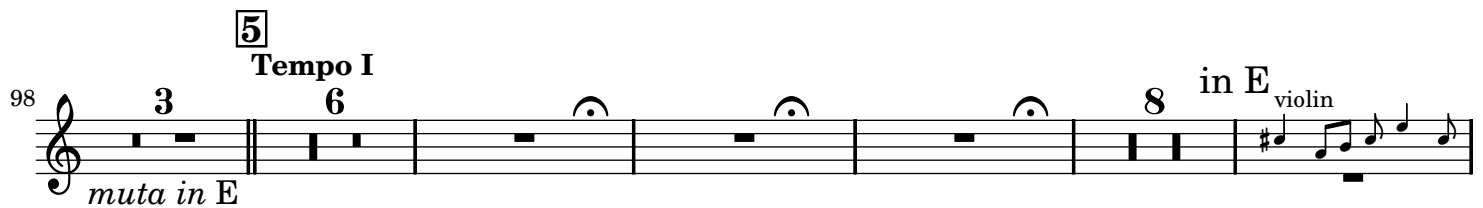
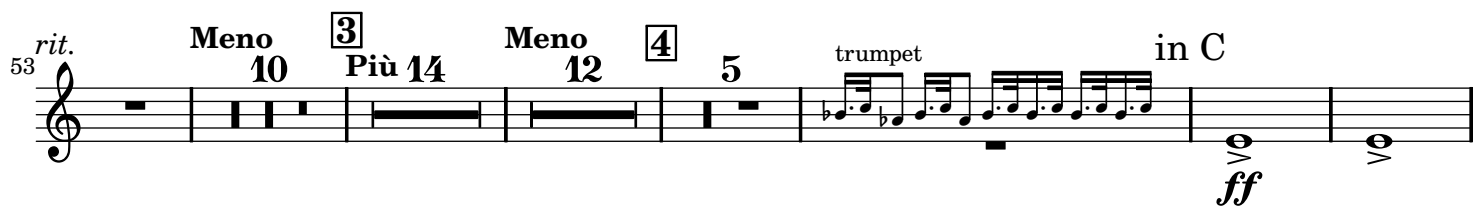
Horn IV

Antonín Dvořák

Op. 95 (1893)

Movement II (Movement I starts on page 6.)

in C **Largo**



Movement III
in E **Molto Vivace**

4 28

violin 8va

ff

44

1

ff

57

2
a tempo

Poco Sost.

8 31 14

violin 8va

f

120

3

f

ff

134

\emptyset

2 3 4 5 6 7 8 3

p **pp**

p

pp

154

4

17

violin 8va

p

182

5 47 **6** 9 D.C. al \emptyset

f **p**

f

p

248

4 in C

14 7 2 horn

in E

f *ff* *ff*

278

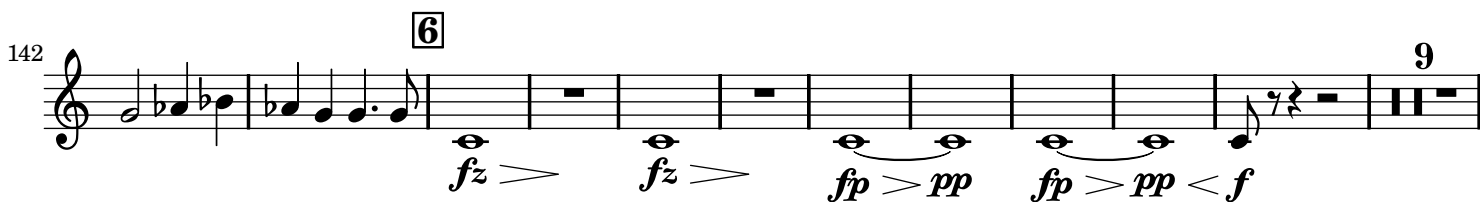
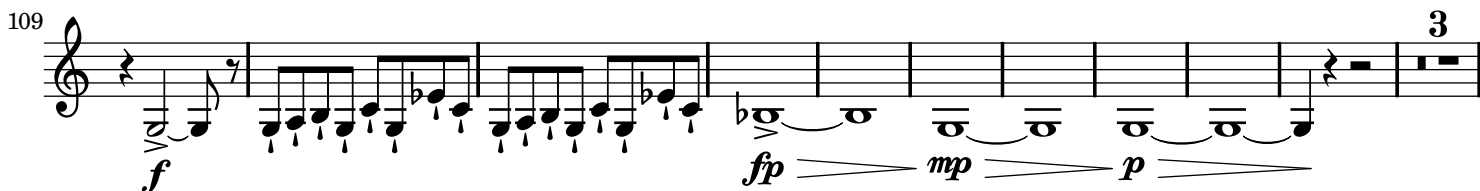
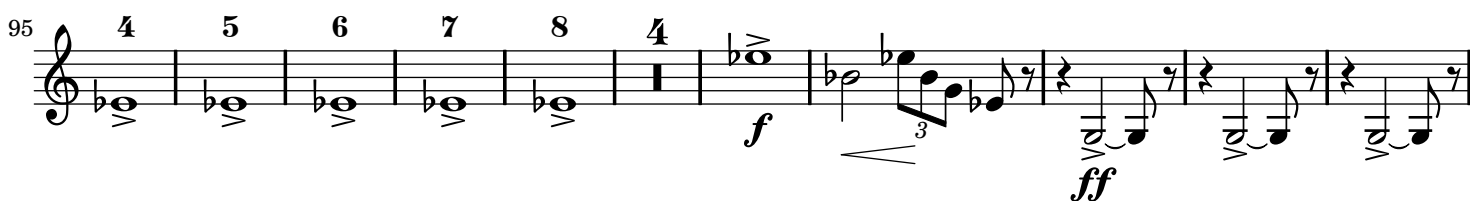
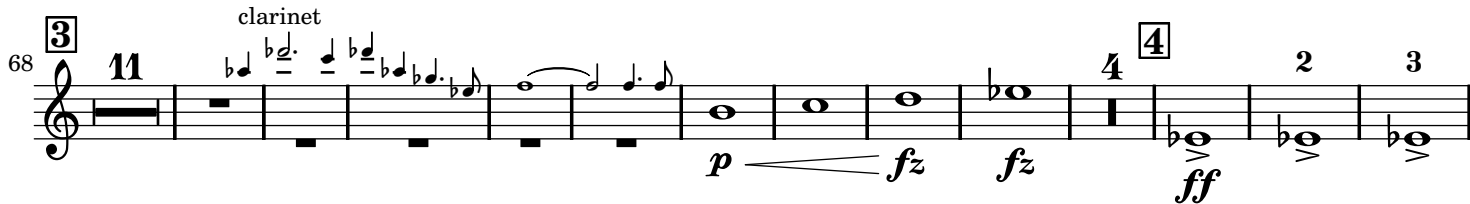
11 G. P.

bass 8vb

fff *ff*

Movement IV
in E **Allegro con fuoco**

5 violin 15ma



flute 8va

162

7

pp

174

2

pp

ff

187

in C

2

8

ff

fz

fz

ff

fz

fz

f

in E

2

198

ff

ff

fz

fz

fz

fff

209

9

Meno

13

Tempo I

24

10

Sostenuto

16

horn I

269

stringendo

11

Tempo I

p

ffz

fff

f

282

ff

289

12

ff

ffz

fz

301

fz

fz

fff

rit.

11

4

a tempo

violin 8va

327

Meno

Tempo I

ff

fff

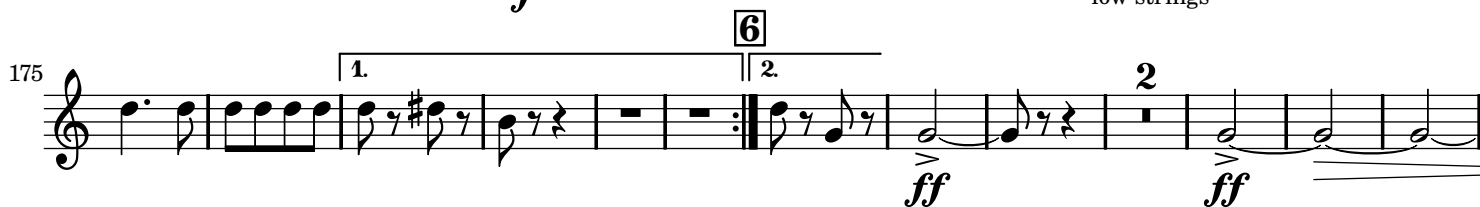
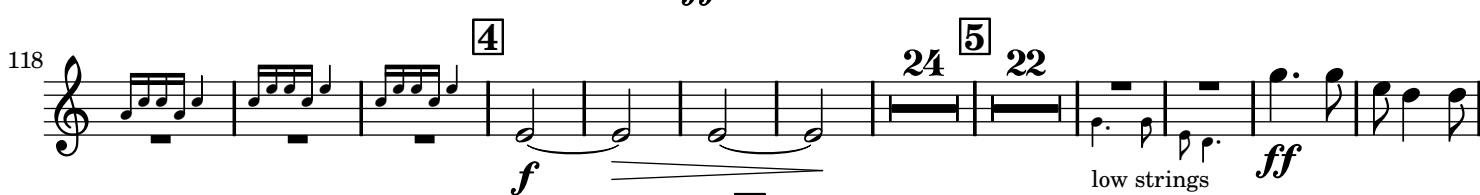
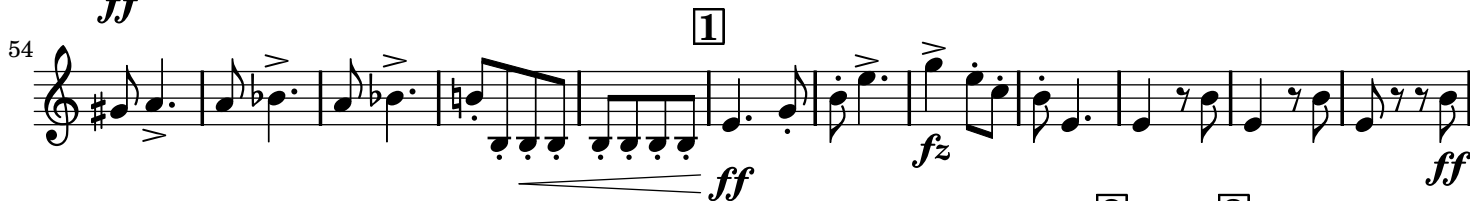
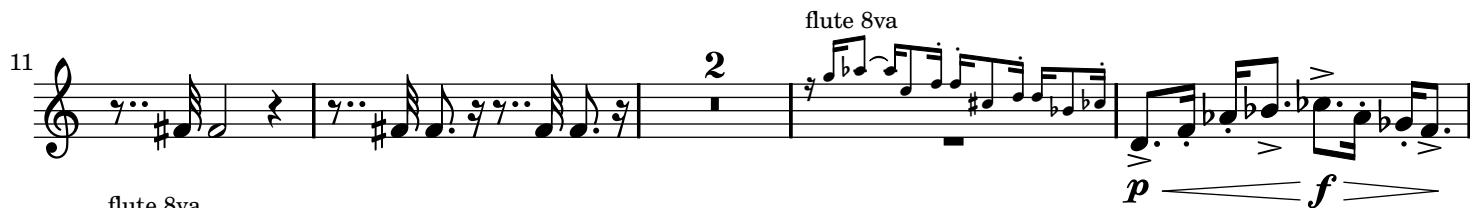
339

ppp

Detailed description of the musical score: The score is for Horn IV, spanning measures 162 to 339. It begins with a flute 8va part in measure 162. The Horn IV part starts in measure 162 with a piano (pp) dynamic. There are several measures of rests followed by notes. Measure 174 has a piano (pp) dynamic. Measure 187 has a forte (ff) dynamic and a key change to C major. Measure 198 has a forte (ff) dynamic. Measure 209 has a mezzo-forte (fz) dynamic and a key change to E major. Measure 269 has a piano (p) dynamic and a stringendo instruction. Measure 282 has a forte (ff) dynamic. Measure 289 has a forte (ff) dynamic. Measure 301 has a forte (fz) dynamic and a ritardando (rit.) instruction. Measure 327 has a mezzo-forte (ff) dynamic and a tempo instruction. Measure 339 has a pianissimo (ppp) dynamic.

Movement I

in C Adagio



245 **8** *ff* *fz* *ff* **4**

260 *fz* *p* *pp* **7** **9** *mf*

280 **8** flute 15ma *ff* *ffz* *ffz* *fz*

300 *fz* *fz* **5** **10** **34** **11** violin 15ma *ff*

349 **4** **20** **12** **18** violin 15ma *p* *f* in E

399 **13** *fff* *fz*

412 *ff*

428

439 *fz* *fz* *fz*