

String Quartet nr. 18 in E minor

for 2 violins, viola and cello

Cello.

Gaetano Donizetti (1797-1848)

Allegro

7

14

18

26

32

37

44

52

57

62

67

f

p

pizz.

arco

pizz.

72



79



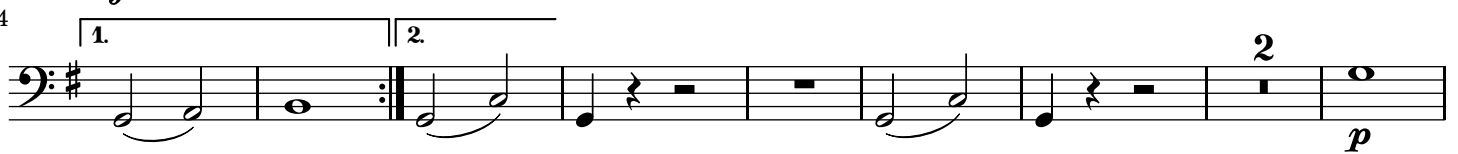
86



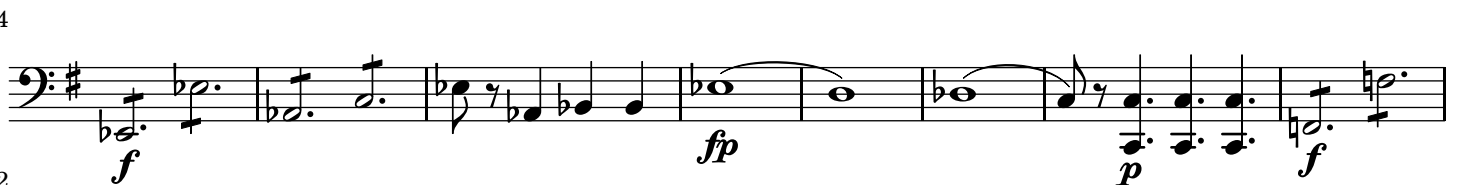
93



104



114



122



129



136



143



150



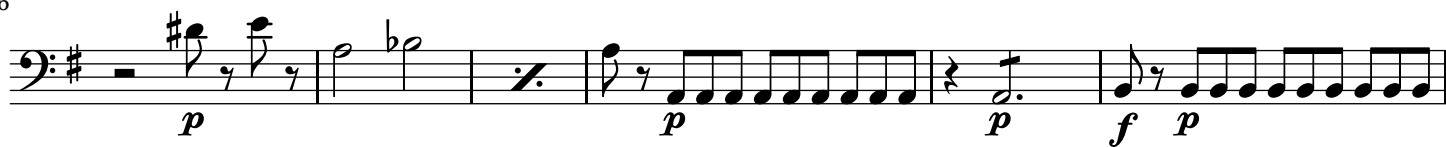
154



160



166



172



179



185



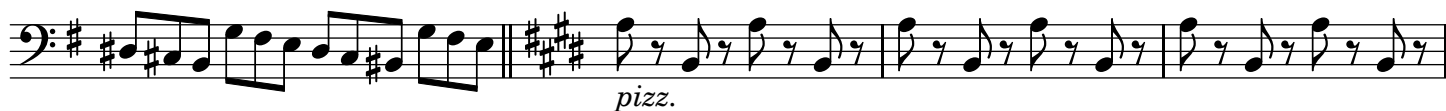
191



196



200



204



209



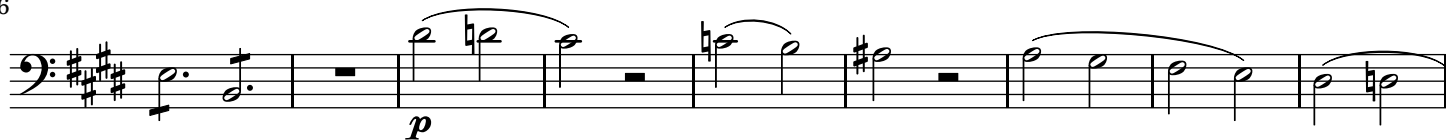
214



220



226



235



243



250



256



261



266



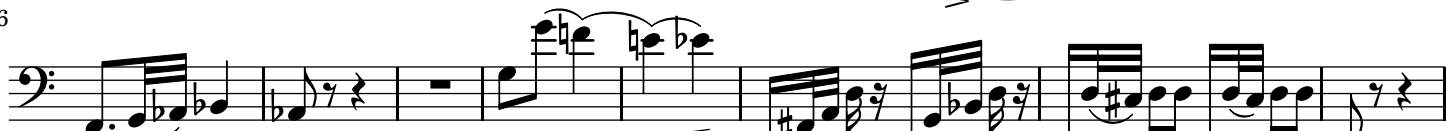
ADAGIO



12



36



44



53



61



65



69



74



82



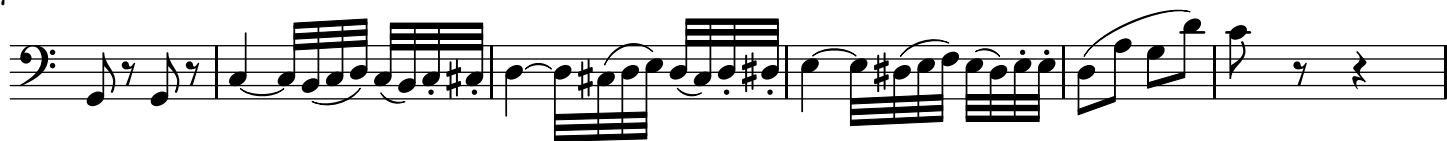
90



97



107



111

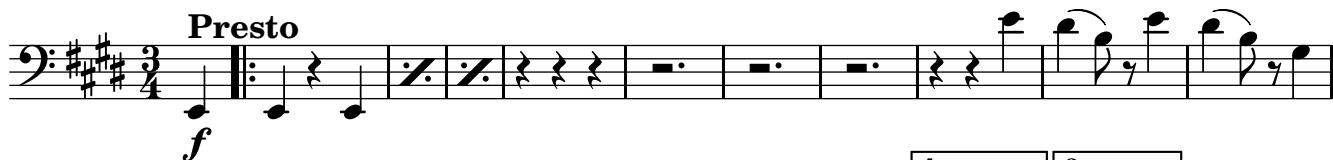


119



MINUETTO

Presto



11



23



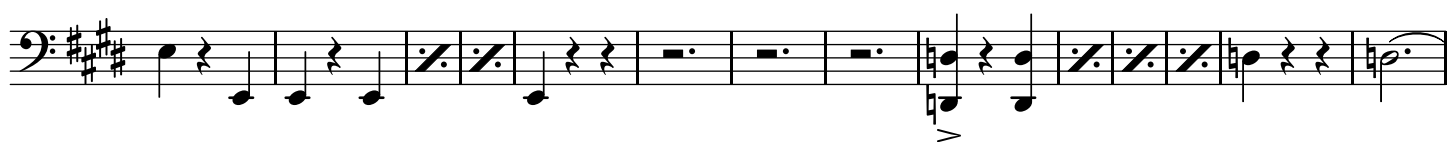
35



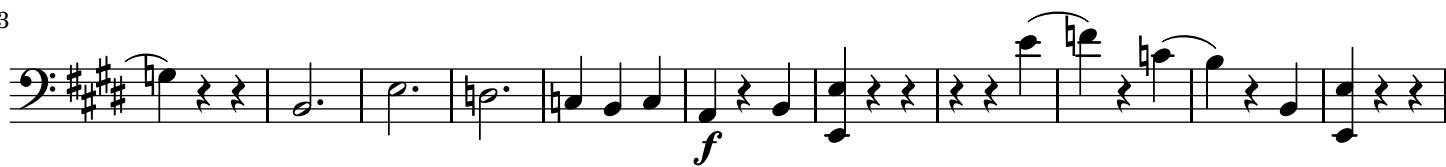
48



59



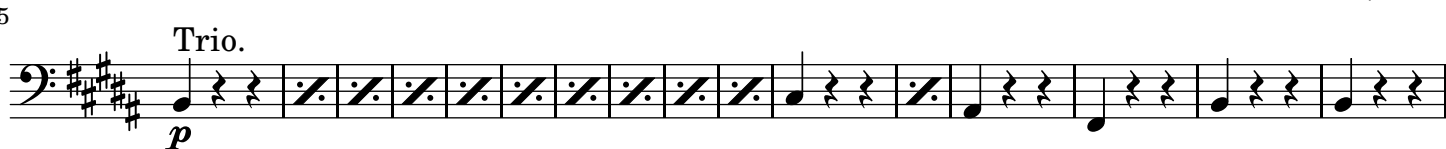
73



84



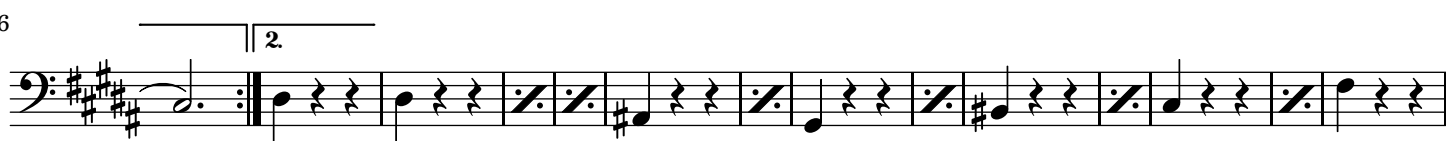
95



111



126



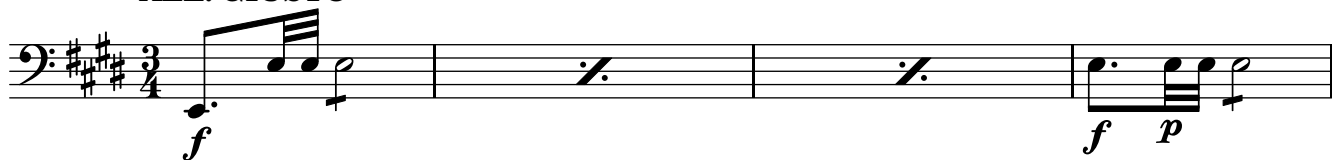
140



154



ALL. GIUSTO



5



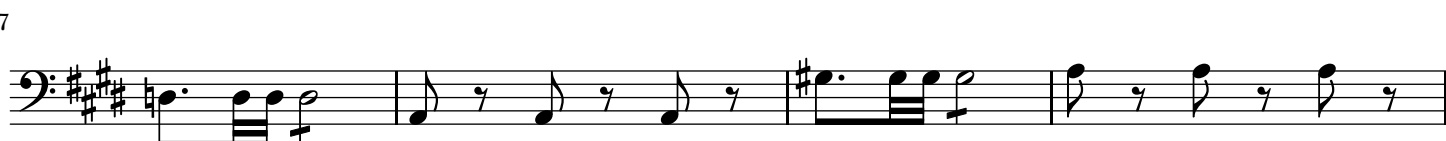
9



13



17



21



24



28



33



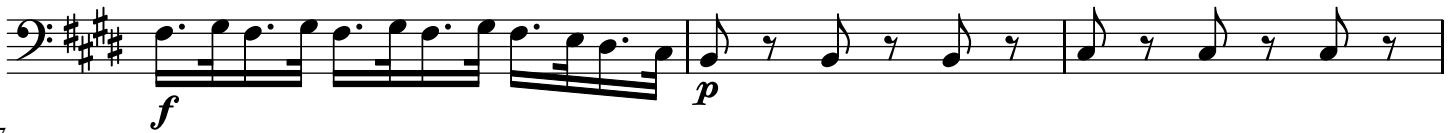
36



40



44



47



50



53



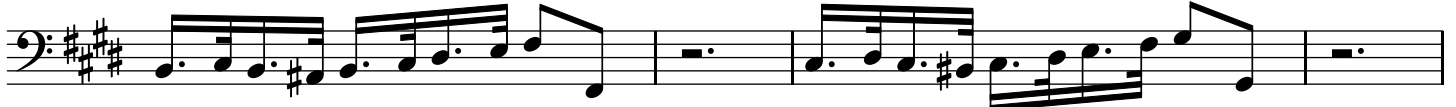
56



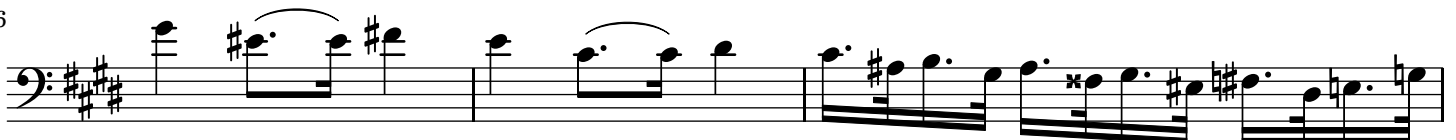
59



62



66



The bass line of 'The Rose Tree' is written on a single staff in bass clef with a key signature of three sharps (F#, C#, G#). The melody consists of the following notes: G2 (quarter), G2 (quarter), A2 (quarter), B2 (quarter), C3 (quarter), B2 (quarter), A2 (quarter), G2 (quarter), F#2 (quarter), E2 (quarter), D2 (quarter), C2 (half). The notes are written in a simple, folk-like style with a single line of music.

73

76

[illegible]

81

85

The bass line of 'The Rose Tree' is written on a single staff in bass clef. The key signature has three sharps (F#, C#, G#). The melody begins with a repeat sign, followed by a half note G2, a quarter note F#2, and a quarter note E2. The melody then continues with a quarter note D2, a quarter note C#2, a quarter note B1, and a quarter note A1. The melody concludes with a quarter note G1, a quarter note F#1, and a quarter note E1.

89

93

[illegible]

96

Musical notation for the bass line of 'The Rose Tree'. The key signature is three sharps (F#, C#, G#). The melody consists of a series of eighth and sixteenth notes, with some measures containing triplets. The notation is written on a single staff.

99

103

3

musical notation for the bass line of 'The Rose Tree'.

106

[illegible]

111

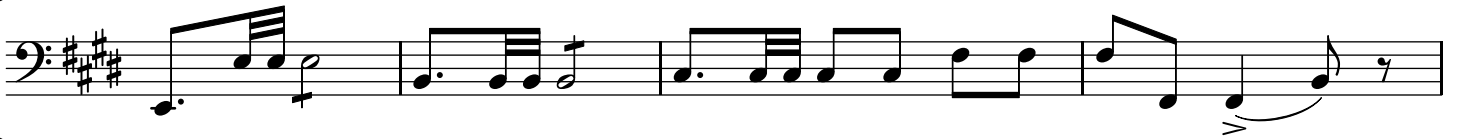
116

The bass line of 'The Rose Tree' is written in 2/4 time with a key signature of three sharps (F#, C#, G#). The melody begins with a quarter rest, followed by a quarter note G#4, an eighth note F#4, and a quarter note E4. This is followed by a quarter note D4, an eighth note C#4, and a quarter note B3. The melody then continues with a quarter note A3, an eighth note G#3, and a quarter note F#3. The melody concludes with a quarter note E3, an eighth note D3, and a quarter note C3. The bass line is written on a single staff with a treble clef.

121



125



129



134



138



141



144



147



152



156



159



163



166



169



172



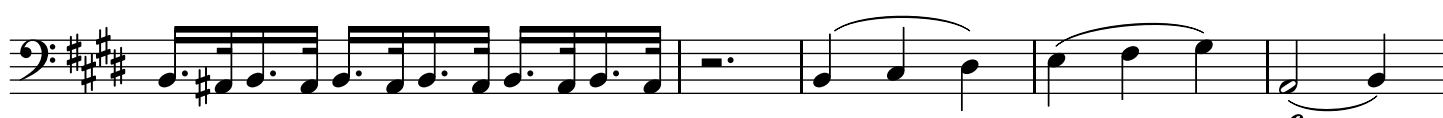
175



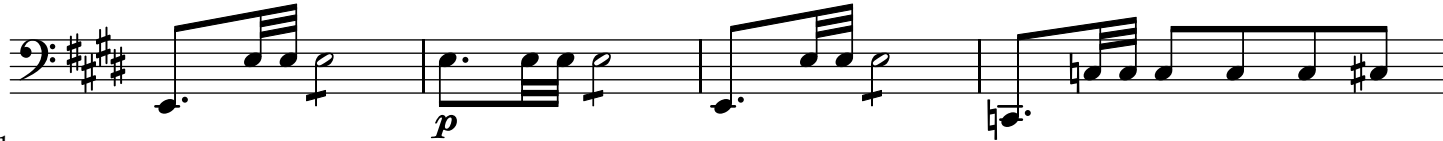
178



182



187



191



194



198



204



208



212



215

