

Symphony No. 3 in E \flat Major

Eroica

Bassoon I

Ludwig van Beethoven (1770-1827)

Op. 55

Allegro con brio (♩. = 60)

Allegro con brio (♩. = 60)

27

37

55

65

74

84

97

114

126

sf sf sf sf sf sf sf sf sf

138

cresc. ff f f f

148

pp cresc.

169

sf > p dolce sf sf sf sf

179

cresc. ff

194

p cresc. ff

204

p p cresc.

217

f f ff p

229

sf sf

249

sf cresc. ff sf sf sf sf sf sf sf

261 *sf sf sf sf sf sf sf sf sf sf sf sf sf sf sf*

273 *sf sf sf sf sf sf sf sf sf sf sf sf f f f f f* **I** 11

295 *cresc. p sf sf sf*

304 *f sf*

313 *sf sf sf sf*

322 *ff p sf sf* **K**

331 *sf decresc. dolce cresc. p p* 7

348 *cresc.*

360 *sf sf ff f f f* **L**

373 *f p decresc. pp pp* 2

389 **M** *pp* *f* *ff* *cresc. decresc.* *pp* *cresc.*

432 *f* *sf* *sf* *più f*

443 *ff* *sf* *sf* *sf* *sf* *sf* **N** *sf*

461 *sf* *p* *f* **O**

474

483 *ff* *p* *cresc.* *sf* **P**

493 *sf* *cresc.* *sf* *p*

507 *cresc.* *f* *sf* *sf* *sf* *sf* *ff* *sf* *sf* **Q**

525 *ff* *sf*

536 *sf* *sf* *sf* *sf* *sf* *sf* *fp* *fp* *p* *cresc.* **R**

548

ff f f f *p* **S**

558

f p ff p p **20**

589

sf cresc. p sf sf sf **T**

600

decresc. pp pp

614

cresc. espress. cresc. decresc.

626

p cresc. p **U** **15**

651

cresc. sf sf **V**

658

f sf

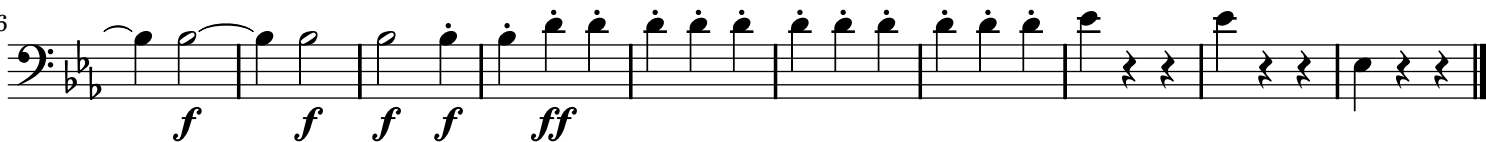
665

sf sf sf ff **W**

676

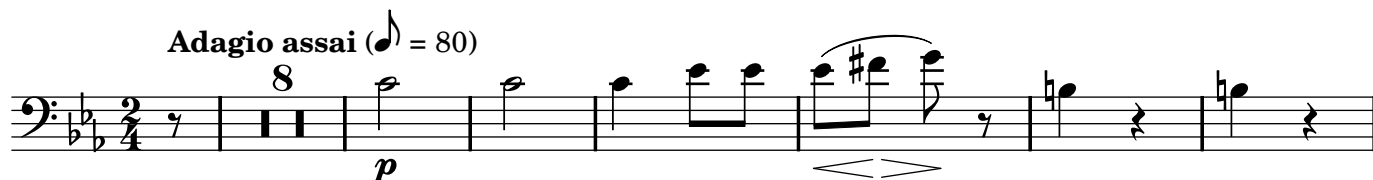
p < > cresc. f f

686

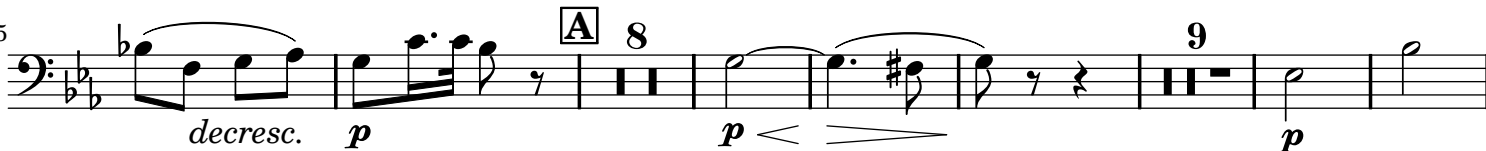


Marcia funebre

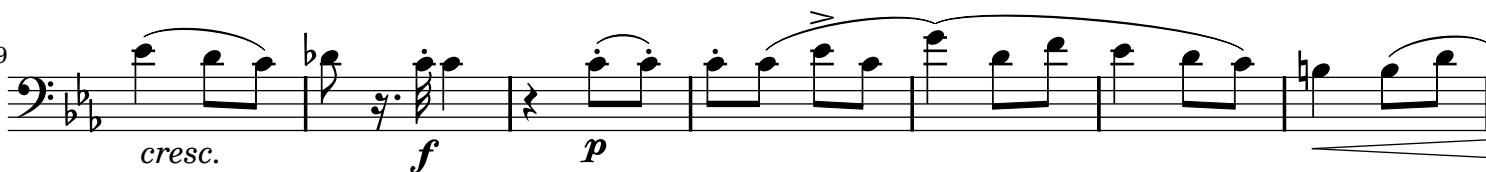
Adagio assai (♩ = 80)



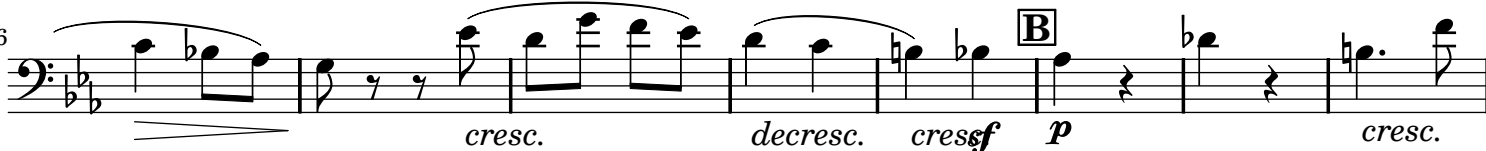
15



39



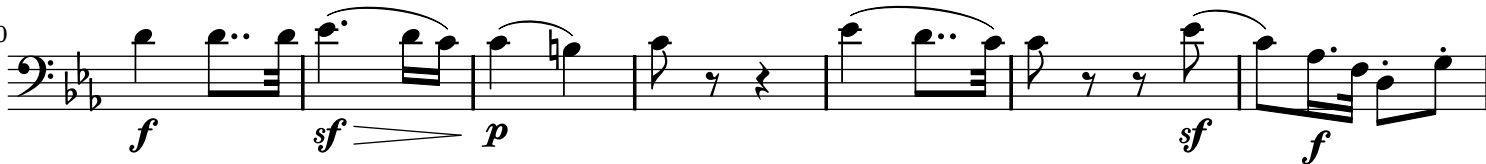
46



54

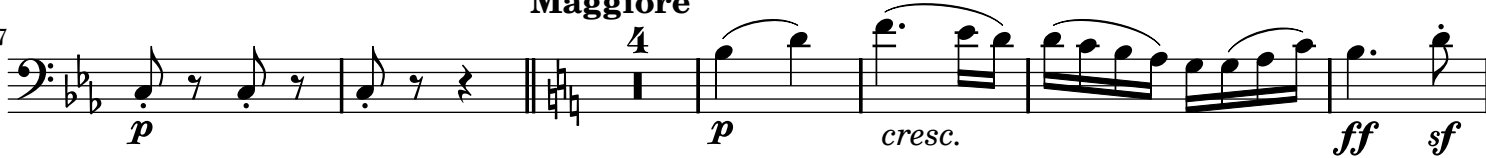


60



Maggiore

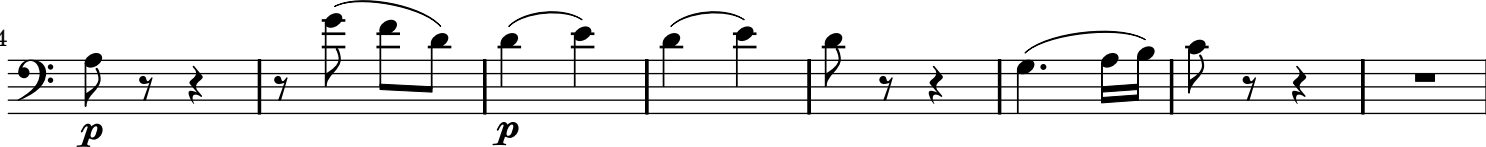
67



77



84



92 *cresc.* *f* *sempre più f* *ff* *sf*

99 *sf* *sf* *sf* **Minore** **8** *f* *sf*

117 *f* *ff* *sf*

133 *sf* *sf* *sf*

141 *sf*

148 **E** *p* *ff*

168 *p* **F**

176 *cresc.* *p* *p*

186 *cresc.* *sf* *p* *cresc.*

194 **G** *p* *cresc.* *f* *p*

200 *f* *sf* *p*

207 **H** *cresc.* *f* *pp* 10

224 2 *p cresc.* *p cresc.* *p* 15 *sf* *p*

Scherzo

Allegro vivace (♩. = 116)

24 *p* 2 21 2

57 *sempre pp* 18 *p* 8

92 **A** *cresc.* *ff*

103 *sf* *sf*

113 3 *p* *f sf sf sf*

126 **B** *p* *p* *p*

137 *p* *p*

148 *cresc.*

158 *ff* *f* *f* *f* *f*

168 *f* *f* *Trio 14* *p* *16* *f*

207 *p dolce* *sempre legato*

217 *37* *6* *27* *p*

296 *23* *2* *sempre pp*

330 *18* *p* *8* *cresc.* *ff* **C**

364 *sf* *sf*

375 *sf* *3*

Alla breve (♩ = 116)

387 *p* *f* *ff* *p*

396 *p* *p* *p*

408 *p*

418 *cresc.* *ff*

428 *f* *f* *pp* *pp*

440 *cresc.* *f* *ff* *ff* *ff*

Coda

Finale

Allegro molto (♩ = 76)

6 *ff* *sf* *sf* *sf* *p*

24 *ff* *p* *ff* *p*

40 *1* *2* *3* *3*

62 *7* *3* *3* *dolce* *cresc.* *sf*

84 *decresc.* *p* *f* *sf*

93 *f* *p* *f*

104 *f* *f* **A**

117 *ff* *p* *p* *cresc.*

147 *f* *sf*

164 *f* *f* *ff*

177 **B** *p* *sf* *sf* *sf*

209 *ff* *sempre f* **C**

218 *sempre f*

226 *sf* *sf* *sf* *sf*

236 *sf sf sf sf sf*

246

254 **D** *p dolce* 51 *ff*

317 **E**

328 *sf*

339 *sf*

349 *Poco Andante* (♩ = 108) *sf p sf cresc. sf > p* 12

371 *cresc. p*

379 **F** *cresc. p < > ff sf sf sf sf sf*

389

395 **G** *sf sf sf p cresc. p cresc.*

405 *p* *f* *sempre più f ff*

421 *p cresc. decresc. p*

429 *decresc. pp ff* **Presto** (♩ = 116)

436 *sf sf sf sf sf sf sf*

444 *sf sf sf sf sf sf sf sf sf sf sf*

452 *sf sf sf sf sf sf sf*

459 *sempre più f ff*

467