

Symphony No. 3 in E \flat Major

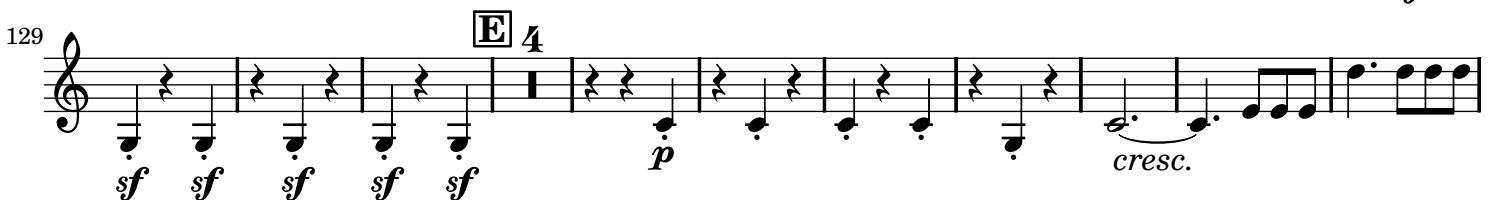
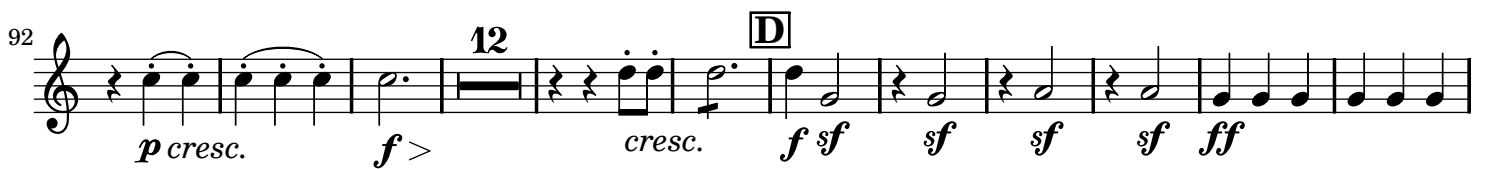
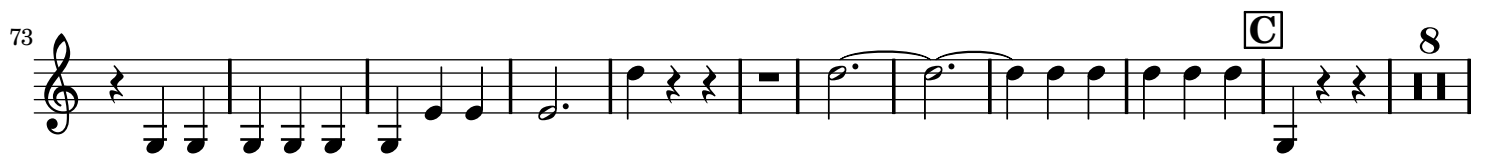
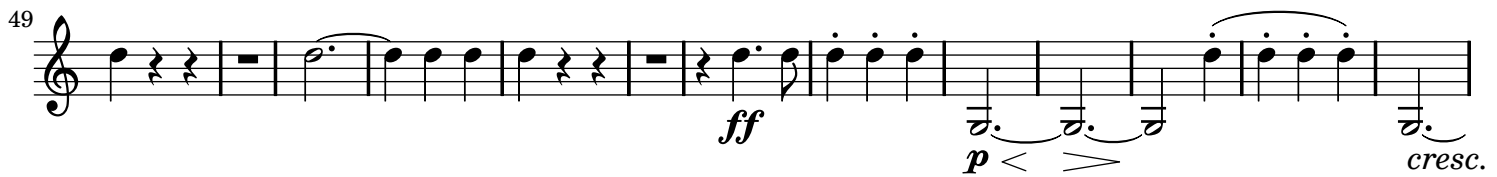
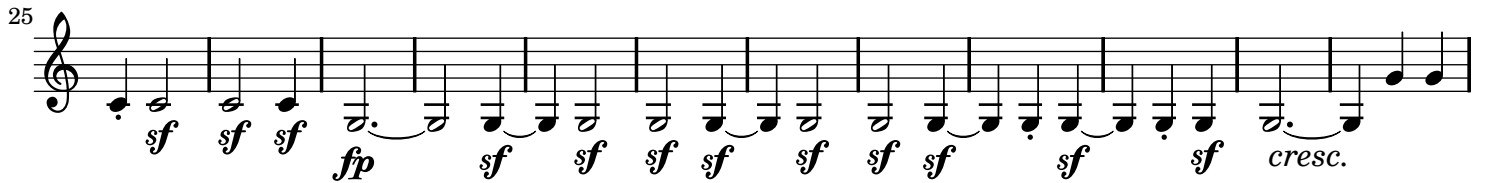
Eroica

Horn II

Ludwig van Beethoven (1770-1827)

Op. 55

Allegro con brio ($\text{♩} = 60$)



143 *ff* *f* *f* *f* *fp* *decresc.* *sfp* 1.

155 2. 12 *p*

180 7 **F** *pp* *ff*

198 4 *ff* 4 *p* *cresc.* 4 *f*

219 **G** *ff* *p*

232 15 **H** *ff* *sf sf sf sf sf sf*

258 6 *sf sf sf sf sf sf sf sf sf sf sf sf sf*

276 **I** 24 *sf sf sf sf sf sf f f f f f f*

311 3 *sf* *sf* *ff*

325 **K** 20 *p*

355 **L** *cresc.* *sempre cresc.* *sf* *ff*

368 **6**
decresc. *pp*

386 **2** **2** **4** **M** **25**
pp *pp* *pp* *f* *ff* *pp*

429 *f* *sf* *più f*

441 **N**
ff *sf* *sf* *sf* *sf*

453 *ff* *p* <

465 **3** **O** *f*

478 **2** **P** **14**
cresc. *ff*

505 **3** **in E \flat** **Q**
p *pp* *cresc.* *cresc.* *f* *sf* *sf* *sf* *sf*

520 *ff* *sf* *sf* *sf* *sf* *ff*

532 **R**
sf *sf* *sf* *sf* *sf* *sf* *p* *sfp* *sfp*

543

555

575

609

623

635

649

660

671

682

S

T

U

V

W

cresc.

ff

f

f

f

p

f

ff

p

pp

cresc.

p

pp

pp

cresc.

decrescp

cresc.

f

sf

sf

sf

ff

p

f

f

f

f

f

ff

146 E 8 *ff* *sf*

163 *sf* *ff* 4 F *p*

174 *cresc.* *p*

180 4 8 2 *p* *cresc.* *p* *sf* >

195 G *p* *f* *p* 3

204 *f* *sf* > *p* *cresc.* *f* 13 *pp*

225 *cresc.* *p cresc.* *p*

234 4 *decresc.* *pp* *sf* > *p*

Scherzo

Allegro vivace (♩. = 116)

30 52 7 A *p* *ff*

96

108  *p*

121  *f sf sf p*

138  *p*

155  *cresc. ff f f*

165  *f f f f sf*

176  *cresc. f*

186  *sf cresc.*

197  *f f*

229  *sf cresc.*

240  *sf sf*

257  *pp f p*

352 **7** **C** *ff*

369

381 **3** *p* **Alla breve (♩ = 116)** *f* *ff*

392 **7** *p*

409 **7** *p* *cresc.*

426 **8** *ff* *f* *f* *p cresc.*

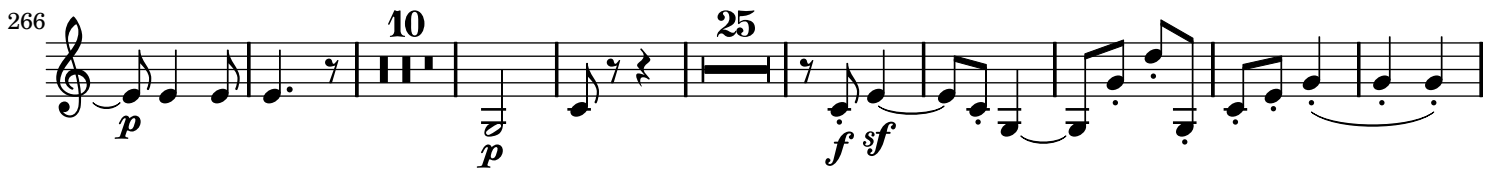
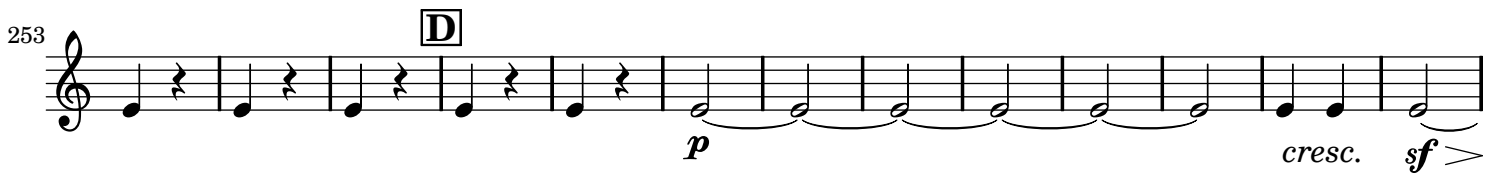
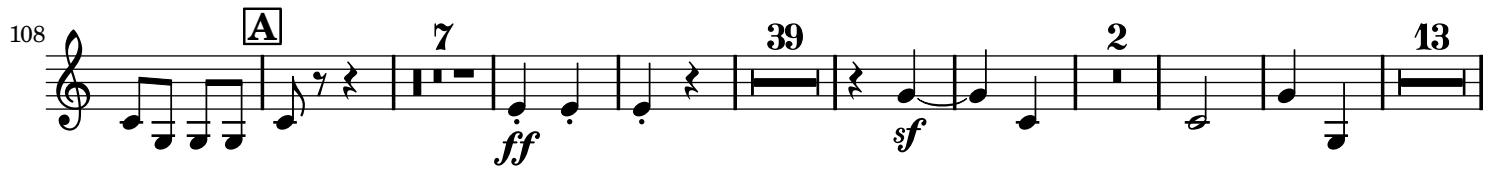
443 *cresc.* *f* *ff* *ff* *ff*

Finale

Allegro molto (♩ = 76) **6** *ff* *sf* *sf* *sf* *ff* *p* *ff*

38 **5** **6** **2** **3** **3** **7** **3** *p*

73 **3** *p* *cresc.* *sf* *decresc.* *p* *f*



370 *cresc.* *p* < > *cresc.* *p* *cresc.*

380 *p* < > *ff sf sf sf sf* **F**

389 *sf sf sf sf* **G**

399 *p cresc. p cresc. p*

410 *cresc. f ff ff* **2 12 Presto** (♩ = 116)

435 *sf sf sf sf sf sf sf sf* **2**

446 *sf sf sf sf sf sf sf sf*

456 *sf sf sf sf sempre più f ff*

466