

# Symphony No. 3 in E $\flat$ Major

Eroica

Bassoon I

Ludwig van Beethoven (1770-1827)

Op. 55

Allegro con brio ( $\text{♩} = 60$ )

27

37

55

65

74

84

97

114

126

*f* *p* *cresc.* *fp* *sf* *sf* *sf*

*sf* *sf* *sf* *sf* *sf* *sf* *sf* *sf* *sf* *cresc.*

*ff* *sf* *sf* *sf*

*ff* *p* *cresc.*

*f*

*ff* *p*

*cresc.* *sf* *sf* *cresc.* *sf*

*p* *cresc.* *f* *sf* *sf* *sf* *sf* *ff* *sf*

*sf* *sf* *sf*

*sf* *sf* *sf* *sf* *sf* *sf* *sf* *sf*

138 *cresc.* *ff* *f* *f* *f*

148 *pp* *cresc.*

169 *sf* *p* *dolce* *sfp* *sf* *sf*

179 *cresc* *ff*

194 *p* *cresc.* *ff*

204 *p* *p* *cresc.*

217 *f* *f* *ff* *p*

229 *sfp* *sf*

249 *sf* *cresc.* *ff* *sf* *sf* *sf* *sf* *sf* *sf* *sf* *sf*

261 *sf* *sf* *sf* *sf* *sf* *sf* *sf* *sf* *sf* *sf* *sf* *sf* *sf*

273 *sf* *sf* *sf* *sf* *sf* *sf* *sf* *sf* *sf* *f* *f* *f* *f* *f* *f*

295 *cresc. p sf sf sf*

304 *f sf*

313 *sf sf sf sf*

322 *ff p sf sf* **K**

331 *sf decresc. dolce cresc. p p* 7

348 *cresc.*

360 *sf sf ff f f f* **L**

373 *f p decresc. pp pp* 2

389 *pp f ff cresc. decresc. pp cresc.* **M** 2 6 23 2

432 *f sf sf più f*

443 *ff sf sf sf sf sf* **N** 7

461 *sf* *p* *f* **O**

474

483 *ff* *p* *cresc.* *sf* **P**

493 *sf* *cresc.* *sf* *p*

507 *cresc. f sf sf sf sf ff sf sf* **Q**

525 *ff* *sf*

536 *sf sf sf sf sf sf sf sf p p cresc.* **R**

548 *ff f f f p* **S**

558 *f p ff p p* **T**

589 *sf cresc. p sf sf sf*

600 *decresc. pp pp*

614 *cresc. espress.* *cresc.* *decresc.*

626 *p* *cresc.* *p* **U** 15

651 **V** *cresc.* *sf* *sf*

658 *f* *sf*

665 *sf sf sf ff* **W**

676 *p* *cresc.* *f f*

686 *f f f f ff*

## Marcia funebre

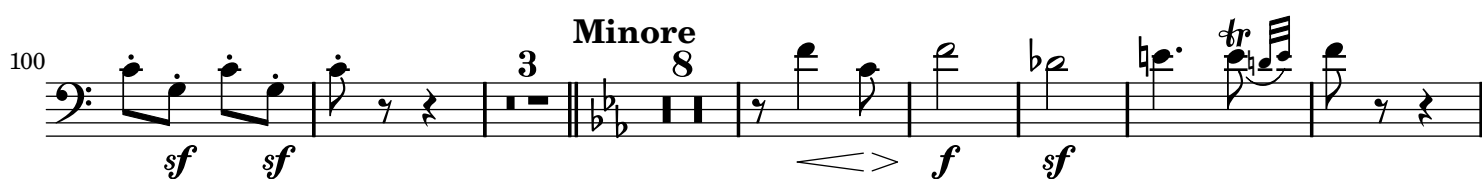
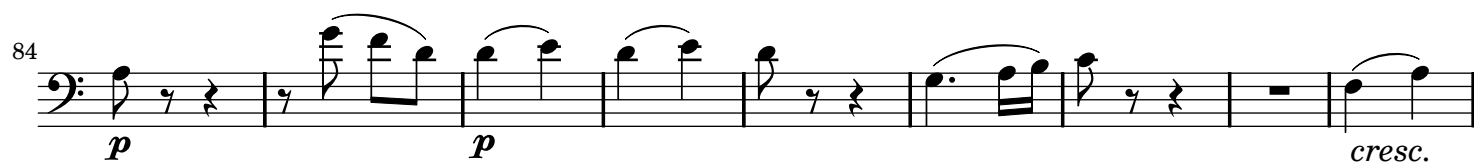
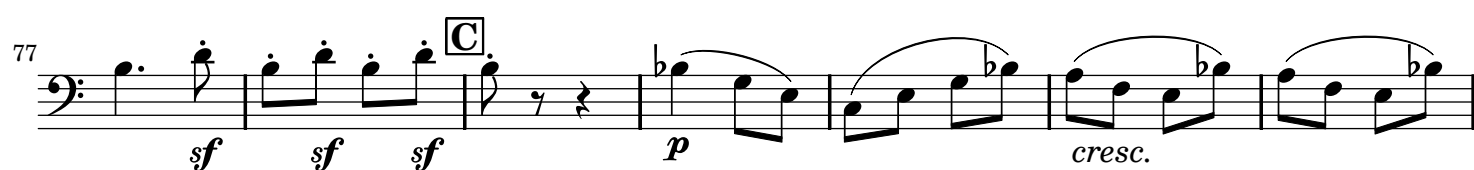
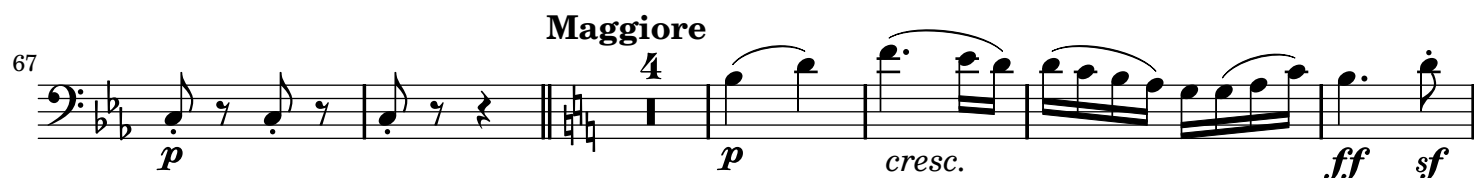
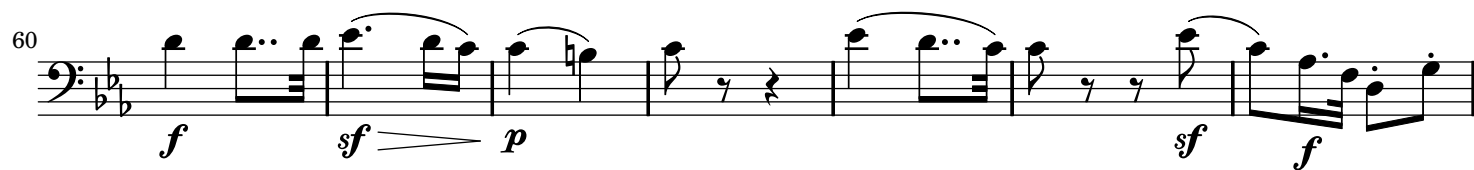
Adagio assai (♩ = 80)

8 *p*

15 *decresc.* *p* **A** 8 *p* 9 *p*

39 *cresc.* *f* *p*

46 *cresc.* *decresc.* *cresc.* *sf* *p* **B** *cresc.*



148 E 2 11 2

*p* *ff*

168 2 F 2 2 2 2 2

*p* *cresc.* *p* *p*

176 4

*cresc.* *p* *p*

186 cresc. cresc.

*sf.* *p* *cresc.*

194 G cresc. *f* *p*

*p* *cresc.* *f* *p*

200 *f* *sf* *p*

207 H 10 21 2

*cresc.* *f* *pp* *p*

224 2 15 2

*p cresc.* *p cresc.* *p* *sf* *p*

## Scherzo

Allegro vivace (♩. = 116)

24 2 21 2

*p* *p* *p* *p*

56 18 2

*sempre pp* *p* *p*

83 **A** *cresc. ff*

101 *sf sf*

111 *p* **3**

123 *f sf sf sf p p* **B** *tr*

134 *p p p*

145

155 *cresc. ff f f* **1.**

165 *f f f f p* **Trio 14** **16**

204 *f p dolce* *sempre legato*

214 **37** **1.** **6** **2.** **27**

293 *p* **23** **2** *sempre pp*



[illegible]

40

6 2 3 3

7 3 3

*dolce* *cresc.*

83

*sf* *decresc.* *p* *f* *sf*

92

*f* *p* *f*

103

*f* **A** 4

115

*f* *ff* *p* 4 15 *p*

143

*cresc.* 2 *f* *sf*

156

4 2 *f* 2 *f*

**B** 23 *p* *sf* *sf* *sf*

173

*ff*

205

3 3 *ff* **C** *sempre f*

214

221 *sempre f*

229 *sf sf sf sf sf sf sf*

240 *sf sf*

249 **D**

258 *p dolce* *ff*

322

332 *sf*

343 *sf sf p* **Poco Andante** (♩ = 108)

352 *sf cresc. sf > p cresc.*

373 *p* *p* *cresc.*

381 *p* *ff sf sf sf sf sf*

391 

398 

408 

424 

431 

438 

446 

454 

460 

468 